

CANOLFAN Y CELFYDDYDAU
ABERYSTWYTH ARTS CENTRE

Aberystwyth Arts Centre Visit Support Pack

This is a visual resource for people attending events and activities at the Arts Centre. We hope it will help prepare you for your visit to the Arts Centre and to help you become familiar with the building.

There are notes to help carers or accompanying friends and family to prepare for your visit – but if you have any questions before your visit please do get in touch. If you have suggestions for how we could improve the information in this pack, please let us know.

We look forward to welcoming you to the Arts Centre and hope you enjoy your visit.

Aberystwyth Arts Centre
Aberystwyth University
Aberystwyth
SY23 3DE

Box Office 01970 62 32 32
Email artstaff@aber.ac.uk
Website www.aberystwythartscentre.co.uk



What to expect...

Getting to the Arts Centre

The Arts Centre is in the middle of the Aberystwyth University campus. To get to us you will turn off from the main road (Penglais Hill) and onto the campus. This is what the campus entrance looks like:



You will see the main University reception on your left, and the main bus stop is here too, on the other side of the road. Then you will follow the main route onto the campus. You can see the Hugh Owen Library on your left and the 'Bell Tower' up ahead.



If you are walking or arriving on the Number 3 bus, you will stop at the bottom of steps by the bell tower. Then looking up the steps you will see the Arts Centre at the top.



You can enter the Arts Centre from this level, which is called the Piazza.
If you use this entrance the doors will open automatically.
This is what the entrance looks like from the outside:



If you are in a car, just keep following the road along, turn left at the mini-roundabout, and follow the road up a small hill and a big bend to the visitors car park which is on your left. You'll be able to see the Arts Centre ahead of you at the very end of the road.



It is a Pay and Display car park during the day, but you don't need to pay if you are visiting after 5pm on weekdays or at any time over the weekend. If you would like to use the accessible parking spaces there are some in this car park, or alternatively keep driving a little further along the road and there are some bays on your right which are nearer to the Arts Centre.



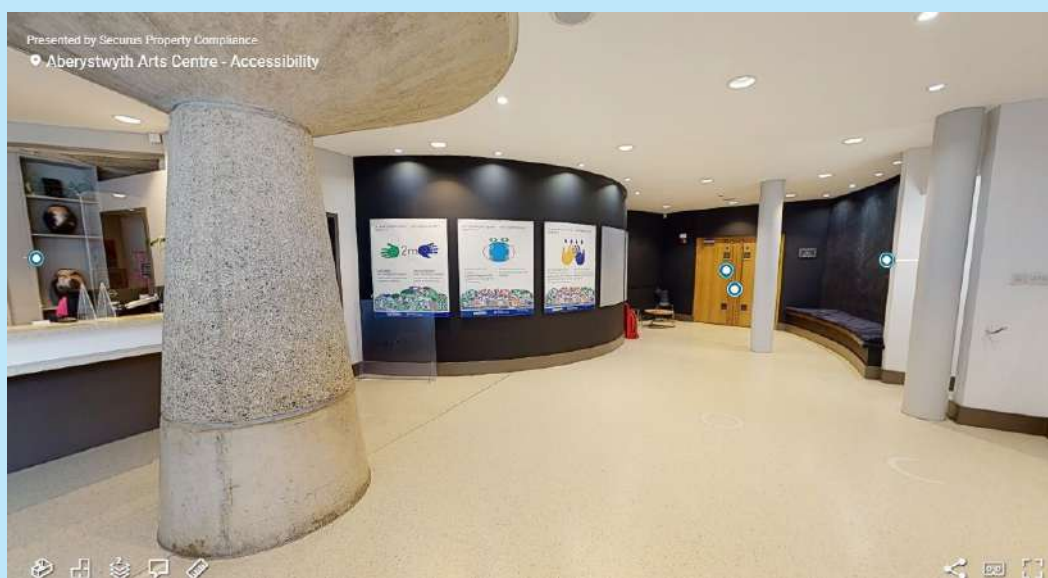
This is what the main entrance to the Arts Centre looks like:



You will go in through the glass doors, which open automatically.

Inside the building

Once inside you will be in a foyer area – it can get quite busy here when there are a lot of shows about to start. In this space is our Craftshop, the lift to take you upstairs, the entrance to our main Gallery, Gallery 1, and the doors into the cinema:



To the right of that is a little corridor – along that there are some toilets (including disabled toilet and baby changing facilities), and the door into the ceramics workshop.

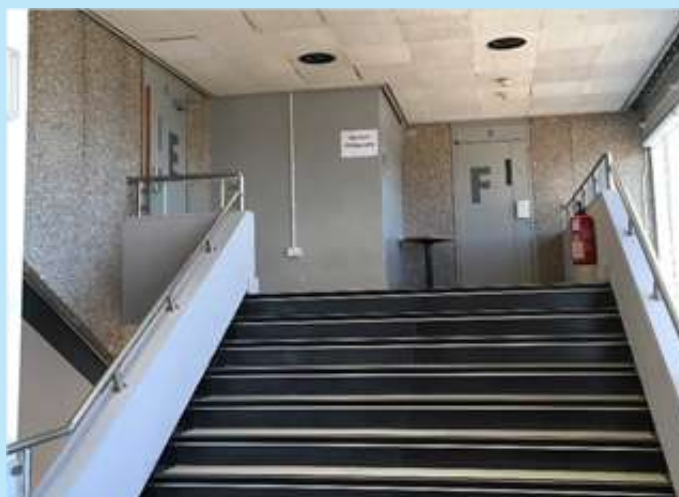
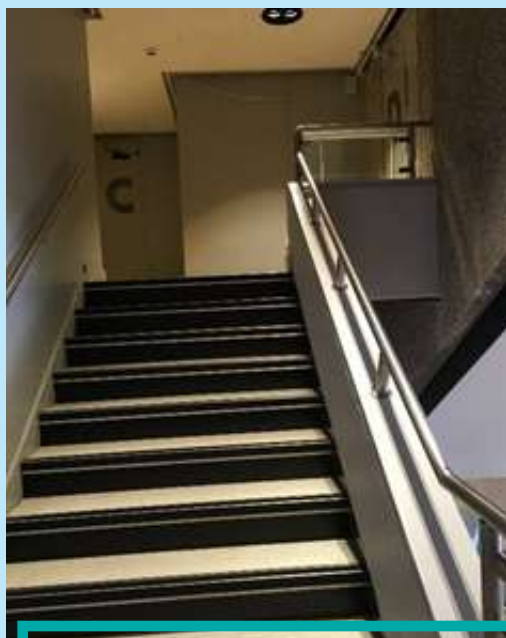
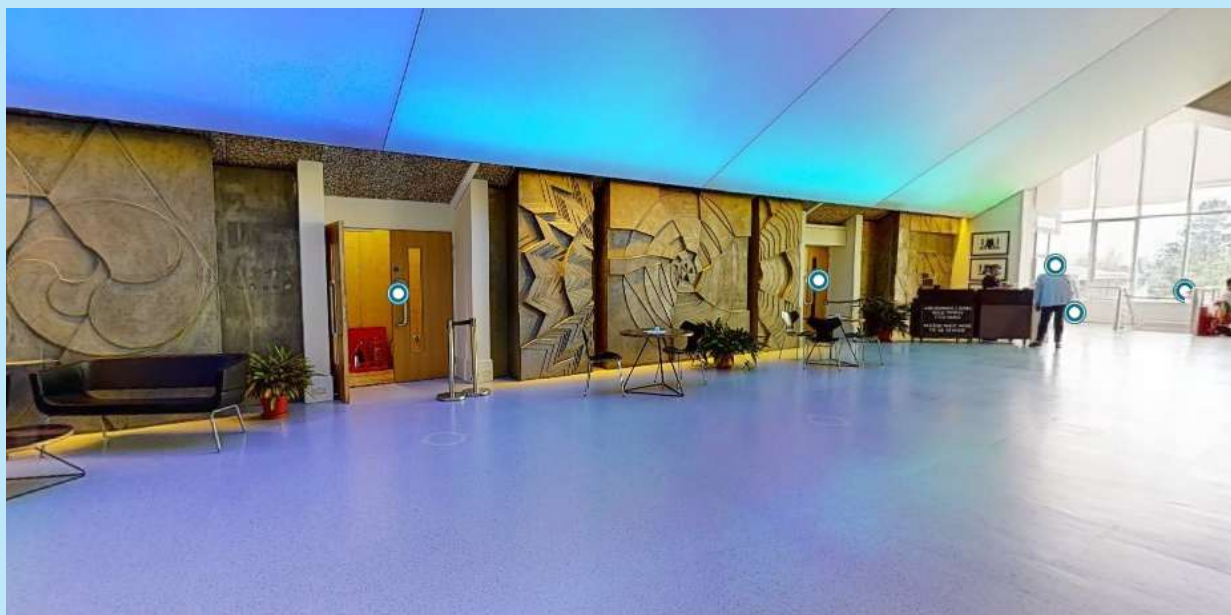
Opposite the entrance doors is reception desk called the Ticket Office (sometimes called the Box Office), which is where you can book and collect your tickets:



We now have an e-ticketing system in place. Your e-ticket will be emailed to you but you will still be able to pick up a printed ticket if you prefer. All tickets will have a barcode printed on them that gets scanned when you enter an event.

Going to an event in the Great Hall

If you turn to the left it takes you into the main foyer for the Great Hall (the biggest hall in the Arts Centre). It's a big space and can get busy with people – there are chairs and tables there for the café, and often exhibitions on the walls. There are toilets in this foyer area. There are two doors labelled A and B in the foyer which take you into the Great Hall. If you have tickets in the balcony then your doors will be up the stairs and through doors C, D, E or F – your ticket will tell you which door to use.



When the show is about to start you will hear a loud 'bing bong' sound over the intercom system and a message in Welsh and English is played asking people to go into the hall ready for the show to start.

This is what the Great Hall looks like inside:



When you go into the Great Hall you'll be met by one of our friendly volunteer ushers. They will ask to see your ticket to check that you are in the right area of the hall and will direct you to your seats. There are enough seats for 960 people in the hall if we sell every ticket. On your ticket it will say your row number and your seat number. There is a letter on the side of each row so you can find that easily (H is the front row), and the seat numbers are on the underside of each chair.

Our ushers stay in the show throughout, and they can help you if you need any assistance. They will be able to let you know if there is an interval in the performance, and how long the performance will last.

When the performance is about to start, the lights will be dim in the auditorium, and the lights on the stage become brighter. Audiences will often clap at the start of a show as the performers come onto stage. At the end of a show if everyone has really enjoyed it they might cheer as well as clap them. Once the performance has finished the lights will become brighter again.

Going to an event in the Theatre or the Round Studio

The Arts Centre's theatre is called Theatr y Werin and is on the top floor. The Round Studio is also on the top floor. You can get to them by either taking the lift from where you first came into the building, or by going up the stairs from the main foyer.

If you go up the stairs, you'll see a curved archway with 'Theatr y Werin' written above it, and that takes you into the theatre foyer area:



When the show is about to start you will hear a loud 'bing bong' sound over the intercom system and a message in Welsh and English is played asking people to go to their seats ready for the show to start.

Theatr y Werin is on the left.

Doors 1 and 2 are signposted from this area. In between them is a small set of stairs that leads up to Doors 3 and 4.

Your ticket will tell you which door to use.



This is what the theatre looks like inside:



When you go into the theatre you'll be met by one of our friendly volunteer ushers. They will ask to see your ticket to check it and will then direct you to your seats. There are enough seats for 300 people in the theatre if we sell every ticket. On your ticket it will say your row number and your seat number. There is a letter on the side of each row so you can find that easily (F is the front row), and the seat numbers are on the underside of each chair.

The Arts Centre's studio is next to the bar, on the right.
This is what the entrance looks like:



This is what the studio looks like inside – sometimes there are seats in the middle like in this picture, other times that might be empty for the performers, with seats all around.



When you go into the studio you'll be met by one of our friendly volunteer ushers. They will ask to see your ticket to check and will direct you to your seats. The seating in the studio is 'unreserved' so you can choose where to sit.

Our ushers stay in the show throughout, and they can help you if you need any assistance. They will be able to let you know if there is an interval in the performance, and how long the performance will last.



When the performance is about to start, the lights will be dimmed in the auditorium, and the lights on the stage become brighter. At the end of a show if everyone has really enjoyed it they might cheer as well as clap them. Once the performance has finished the lights will become brighter again.

Going to an event in the Cinema

The cinema is just to your right as you come in through the main entrance. This is what the entrance looks like:



This what the cinema looks like inside:



When you go into the cinema you'll be met by one of our friendly volunteer ushers. They will ask to see your ticket will direct you to your seats. There are enough seats for 100 people in the cinema if we sell every ticket.

On your ticket it will say your row number and your seat number. There is a letter on the side of each row so you can find that easily (A is the front row), and the seat numbers are on the underside of each chair.

Our ushers stay in the screening throughout, and they can help you if you need any assistance. They will be able to let you know how long the film will last.



When the screening is about to start, the lights will be dimmed in the auditorium, and the advertising and trailers (small adverts for other films) will be shown. This section usually lasts for ten to fifteen minutes. When that has finished the screen area will adjust with a small whirring sound to make it bigger, and the lights will get darker again ready for the main film to start. At the end of the film the lights will come back on.

Going to see an exhibition

The Arts Centre has four main areas where you can go to see exhibitions. The exhibitions inside the galleries change regularly, so you will be able to see different things here each time you visit.

Gallery 1 is our main exhibition space.

The entrance is just by the Ticket Office.

This is what the way in looks like:



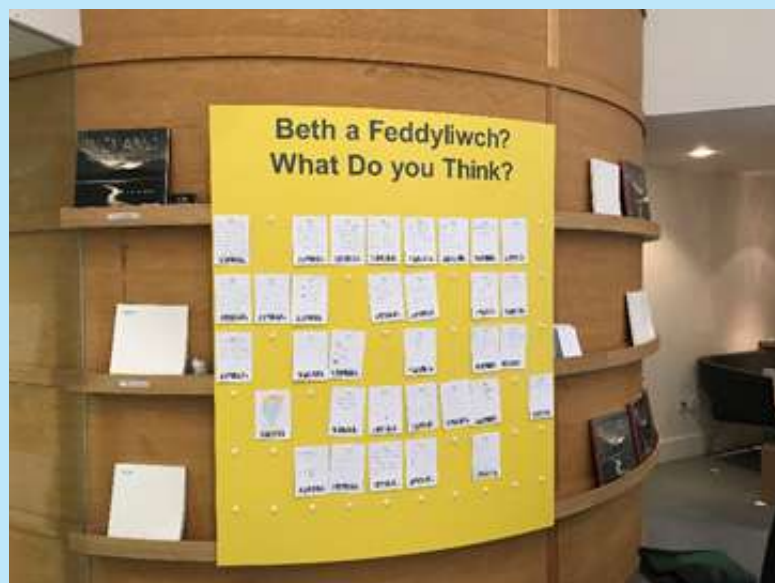
There will always be a member of staff in Gallery 1 so you can ask them any questions you have about the exhibition.



On entering Gallery 1 you will see to your left information handouts that discuss the exhibition. Also available in large format if you ask the Gallery Assistant on duty.

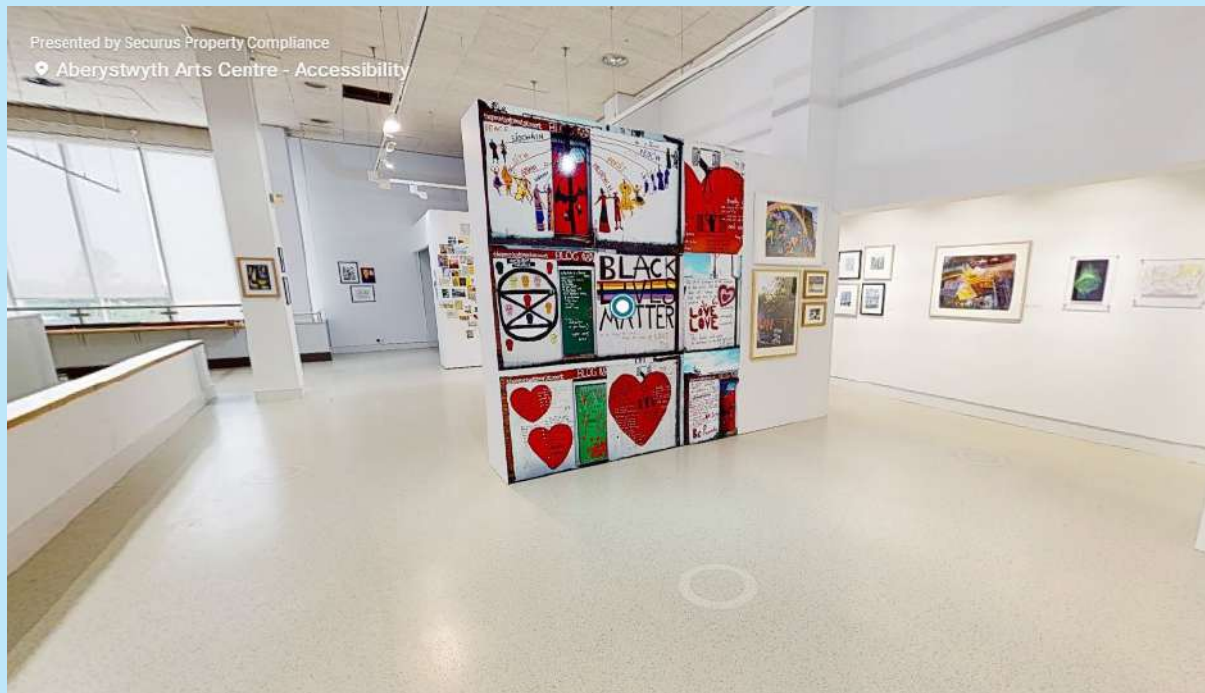
For some exhibitions there will also be audio guides available on headphone sets hung by the entrance.

To your left there is an information space where you can relax and browse books that relate to the exhibition and a chance for you to respond to what you've seen on our comments board.

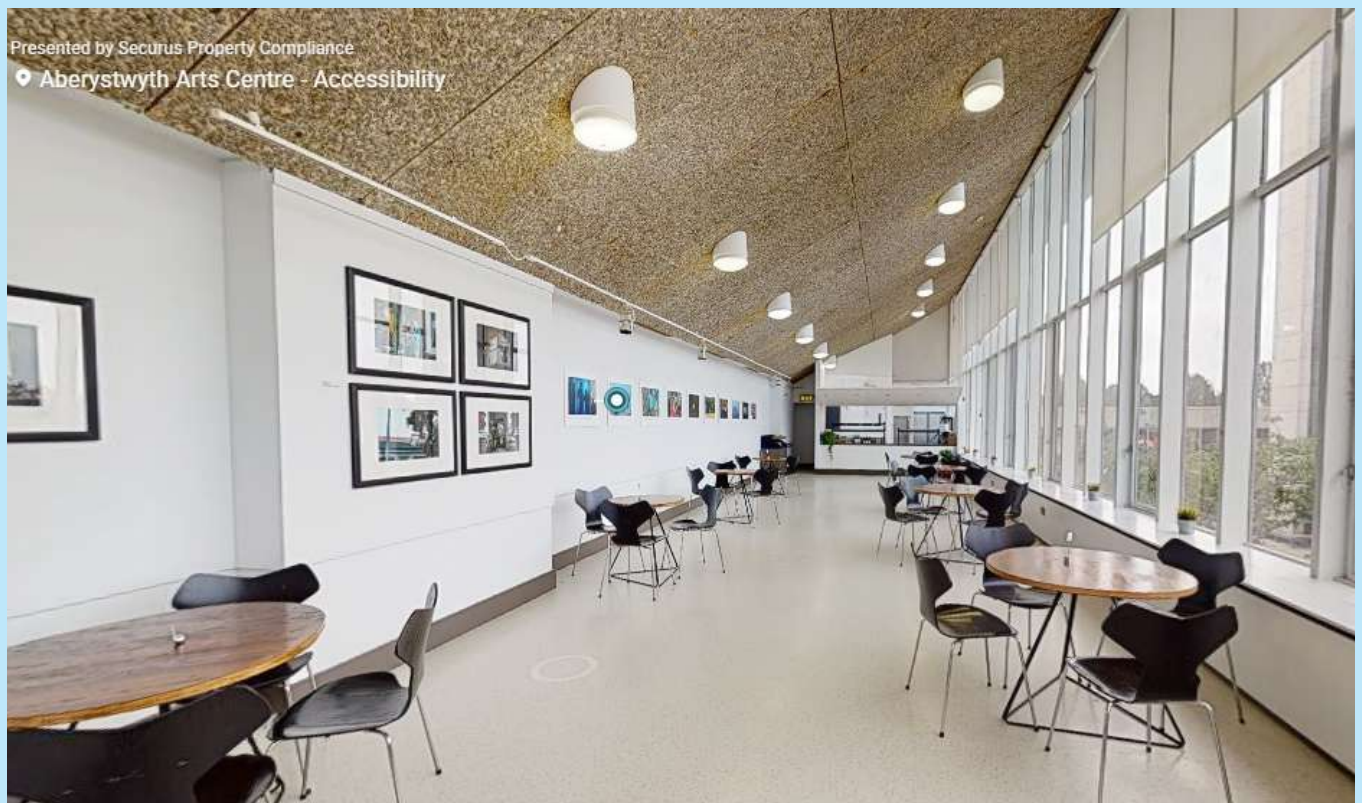


Gallery 2 is our second exhibition space.

It is on the top floor of the Arts Centre, and this is what it looks like:



The **Café Gallery** is on the wall of the café, so that you can see the art as you sit at the café tables:



The University's **Ceramics Gallery** is downstairs on the lowest level of the Arts Centre.

This is what it looks like:



There is also a small gallery space called the 'Piazza Window' which you can see if you walk out of the entrance by the Ceramics Gallery.



Going to a Course or Workshop

The Arts Centre offers lots of different courses and workshops every year, and there are workshop spaces all over the building for different activities.

Here's what they look like:

On the bottom floor of the Arts Centre:

Studio 3 & 4 – this can either be two separate studios using a divider wall, or used as one big room.



On the main (middle) level of the Arts Centre:

Studio 1 & 2 - this can either be two separate studios using a divider wall, or used as one big room.

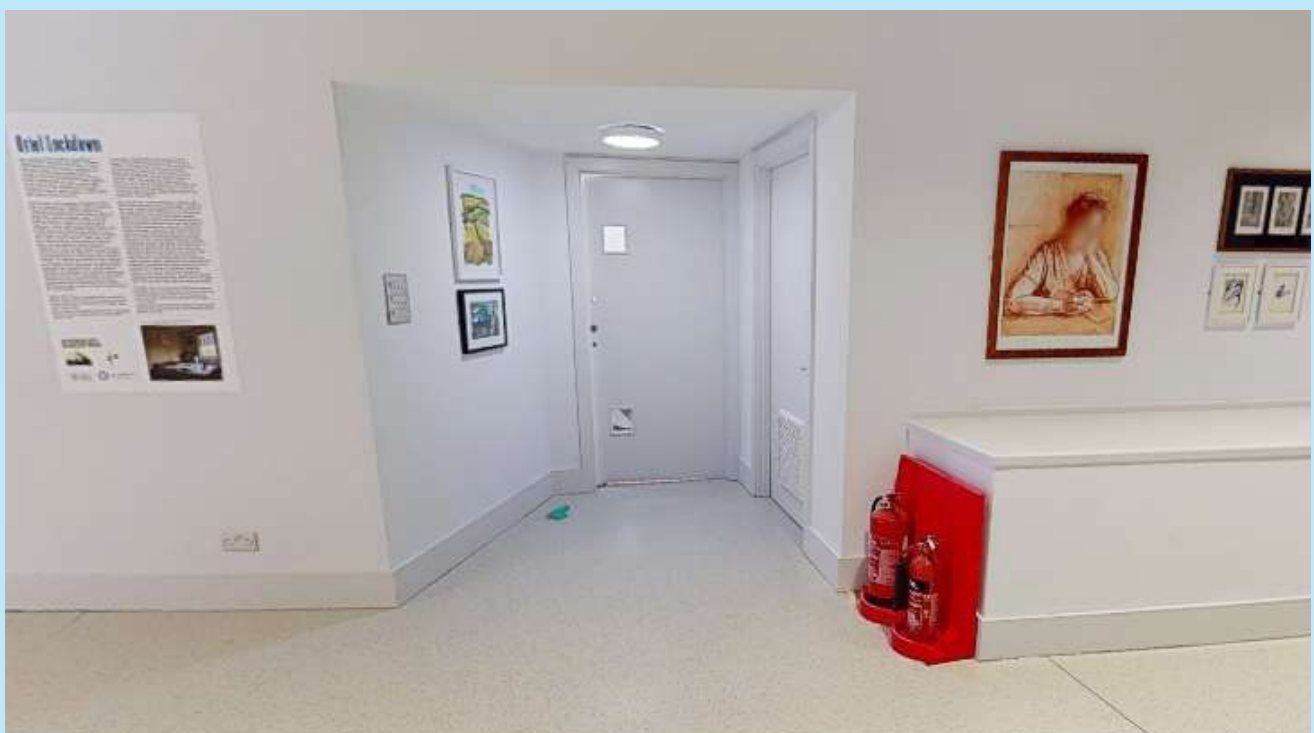


Ceramics Studio

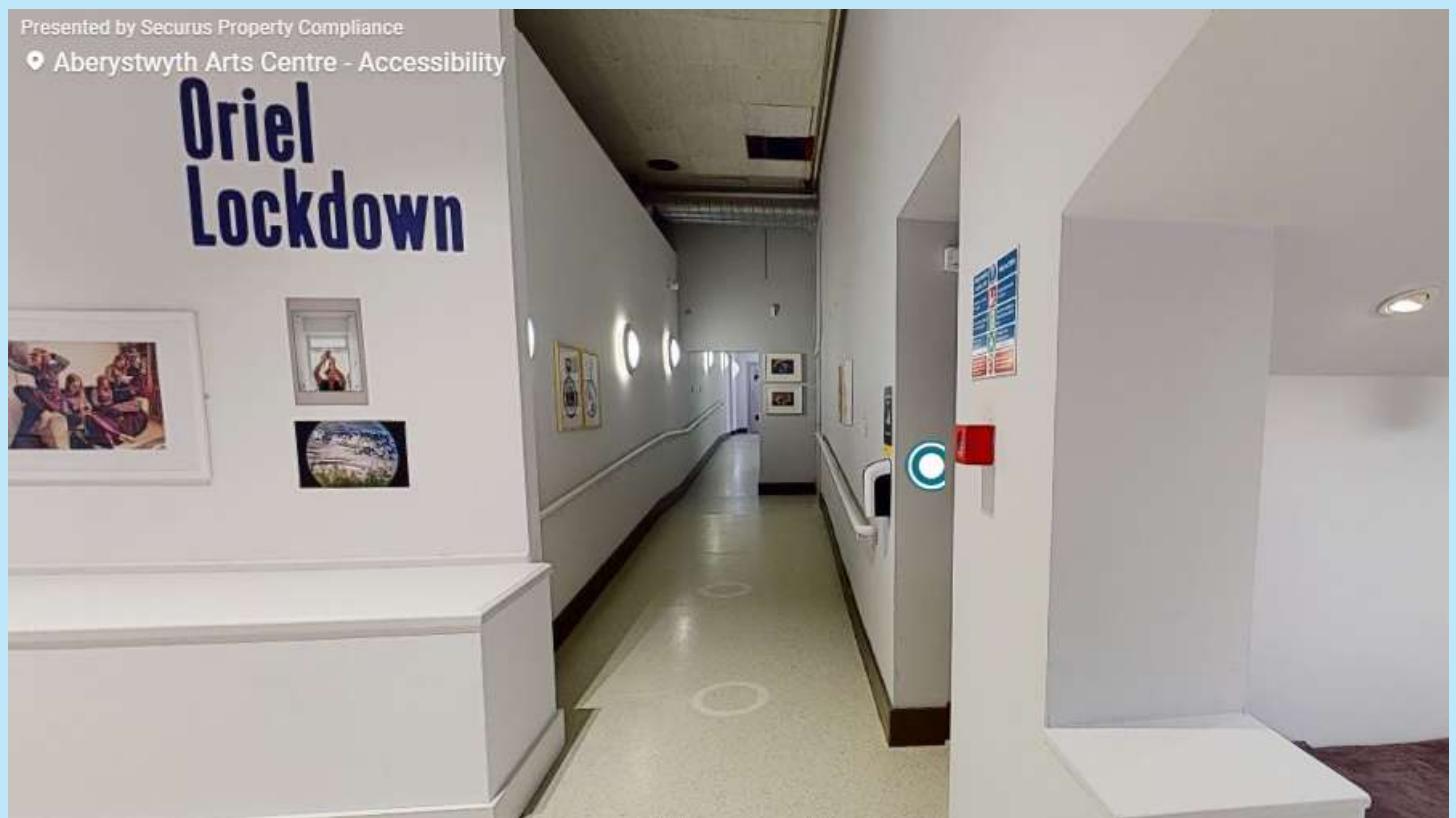


On the top level of the Arts Centre:

The Digilab & Photography Studio are just at the top of the stairs on your left before you go into the theatre foyer:



Also just before the theatre foyer on your left is a corridor which leads to the 2D Studio and Music Studio:



2D Studio:



Music Studio:



Behind the theatre

At the back of the theatre there are also two rehearsal spaces – Rehearsal Room 1 and Rehearsal Room 2.

You will need to go out of the Arts Centre to get to these spaces, up the steps behind the theatre:

This is what Rehearsal Room 2 looks like:



This is what Rehearsal Room 1 looks like:



General Facilities & Notes for Carers

The Arts Centre has a good level of **access** with lifts to all levels, access toilets, and all our auditoria are fully accessible by wheelchair users. There are currently two workshop spaces (Rehearsal Room 1 and Rehearsal Room 2) which are not wheelchair accessible – if you would like to attend an activity which is scheduled to take place in those spaces please contact us and we'll do our best to move them to an accessible room whenever possible.

There are designated seating areas for wheelchair users in the front row of the Great Hall (via a small ramp), on both ends of Row M in the theatre (level access), and the back row (Row H) of the cinema. Please check with the Ticket Office if you have any specific requirements and we'll do our best to help you.

There are two access **toilets** – one close to the Ticket Office, along the small corridor adjacent to the cinema; and a second one on the top floor just to the left of the archway that leads into the theatre foyer. In addition there are general toilets by the cinema, in the main Great Hall foyer, and just off the theatre foyer.

We have **hearing loops** installed in the Great Hall, Theatre and cinema. For the Great Hall and the cinema, you just need to adjust a personal hearing aid to the appropriate setting to pick it up. For the Theatre, we have an infra-red system, so you will need to pick up a headset or necklace receiver in the foyer from the Front of House team in the ice-cream kiosk next to the lift.

We offer regular **subtitled and relaxed screenings** in our cinema each month. Relaxed screenings are shown with no adverts, low lighting, lower levels of sound, subtitles and it's no problem to make a noise or move around – keep an eye on <https://www.aberystwythartscentre.co.uk/disabled-access> for details of forthcoming screenings.

Aberystwyth Arts Centre is part of the **HYNT Scheme**, a Wales wide scheme that works with theatre and arts centres to make things clear and consistent. Hynt cardholders are entitled to a ticket free of charge for a personal assistant or carer not just in the Arts Centre but at all the theatres and arts centres participating in the scheme. Visit www.hynt.co.uk for full details.

Cafés & Bars

Our main café is in the Great Hall foyer. There's a small set of stairs leading from that down to the Piazza Café. The Bar is upstairs in the theatre foyer.