

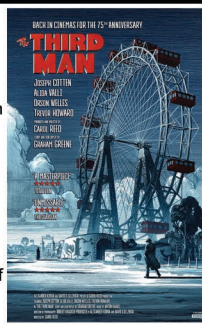
MEDI			SEPTEMBER		
01	Sul/Sun	André Rieu's 2024 Concert The Amazing Spider-Man 2	2.00pm 5.00pm		
02	Llun/Mon	Inside Out 2 Inside Out 2 Kensuke's Kingdom The Ladykillers	10.45am 2.00pm 4.15pm 7.00pm		
03	Maw/Tues	Kensuke's Kingdom Inside Out 2 The Ladykillers Wilding + Q&A	11.00am 2.30pm 5.30pm 7.45pm		
04	Mer/Wed	NT Live: Present Laughter Wilding + Q&A	2.30pm 7.00pm		
05	Iau/Thurs	NT Live: Present Laughter	7.00pm		
06	Gwe/Fri	The Ladykillers (£6 Matinee) Firebrand Blur Live at the Wembley Stadium	2.30pm 5.15pm 7.45pm		
07	Sad/Sat	Neverending Story Firebrand Firebrand	5.00pm 5.00pm 7.45pm		
08	Sul/Sun	Spider-Man: Homecoming Widow Clicquot	2.00pm 5.00pm		
09	Llun/Mon	Firebrand (£6 Matinee) Widow Clicquot	2.30pm 5.15pm		
10	Maw/Tues	Firebrand (£6 Matinee) ROH: The Marriage Of Figaro	2.30pm 6.30pm		
11	Mer/Wed	Neverending Story (parent/baby/relaxed) Widow Clicquot (£6 Matinee) Firebrand Chuck Chuck Baby	10.15am 2.30pm 5.15pm 7.45pm		
12	Iau/Thurs	Firebrand (£6 Matinee) Widow Clicquot NT Live: Prima Facie	2.30pm 5.15pm 7.15pm		
13	Gwe/Fri	The Mountain Within Me (£6 Matinee) Chuck Chuck Baby Alien Romulus	2.30pm 5.30pm 7.45pm		
14	Sad/Sat	Neverending Story NT Live: Prima Facie Alien Romulus	2.30pm 5.00pm 7.45pm		
15	Sul/Sun	NT Live: Prima Facie Spider-Man: Far From Home	2.30pm 5.00pm		
16	Llun/Mon	ROH: The Marriage Of Figaro The Mountain Within Me Alien Romulus	1.00pm 5.15pm 7.00pm		
17	Maw/Tues	Chuck Chuck Baby (£6 Matinee) The Mountain Within Me Alien Romulus	2.30pm 5.45pm 7.45pm		
18	Mer/Wed	CLOSED			
19	Iau/Thurs	CLOSED			
20	Gwe/Fri	The Critic Alien Romulus	5.30pm 7.45pm		
21	Sad/Sat	My Neighbour Totoro (English) The Critic Alien Romulus	2.30pm 5.30pm 7.45pm		
22	Sul/Sun	Spider-Man: No Way Home The Critic	2.00pm 5.00pm		
23	Llun/Mon	The Critic (£6 Matinee) The Critic	2.30pm 6.00pm		
24	Maw/Tues	The Critic (£6 Matinee) Alien Romulus The Critic	2.30pm 5.20pm 7.45pm		
25	Mer/Wed	Totoro (Japanese) (parent/baby/relaxed) NT Live: Prima Facie The Critic (HOH subtitles) Alien Romulus	10.15am 2.30pm 5.30pm 7.45pm		
26	Iau/Thurs	The Critic (£6 Matinee) The Critic Alien Romulus	2.30pm 5.30pm 7.45pm		
27	Gwe/Fri	CLOSED			
28	Sad/Sat	Miss Saigon NT Live: Prima Facie Beetlejuice Beetlejuice	1.00pm 5.00pm 7.45pm		
29	Sul/Sun	Matthew Bourne's Edward Scissorhands Beetlejuice Beetlejuice	3.00pm 5.00pm		
30	Llun/Mon	Beetlejuice Beetlejuice	5.30pm		
HYDREF			OCTOBER		
01	Maw/Tues	Matthew Bourne's Edward Scissorhands Beetlejuice Beetlejuice	6.00pm 7.45pm		
02	Mer/Wed	Beetlejuice Beetlejuice (£6 Matinee) Miss Saigon	2.30pm 7.00pm		
03	Iau/Thurs	Beetlejuice Beetlejuice (HOH subs) Beetlejuice Beetlejuice	5.30pm 7.45pm		
04	Gwe/Fri	Othello (by Shakespeare's Globe) Beetlejuice Beetlejuice Starve Acre	2.00pm 5.30pm 7.45pm		
05	Sad/Sat	My Neighbour Totoro (English) Beetlejuice Beetlejuice NY MET: Les Contes d'Hoffmann	1.30pm 3.30pm 6.00pm		
06	Sul/Sun	Beetlejuice Beetlejuice My Neighbour Totoro (Japanese)	2.30pm 5.00pm		
07	Llun/Mon	The Parallax View Starve Acre	5.30pm 7.45pm		
08	Maw/Tues	The Third Man (£6 Matinee) My Neighbour Totoro (Japanese) Othello (by Shakespeare's Globe)	2.30pm 5.15pm 7.15pm		
09	Mer/Wed	The Third Man (£6 Matinee)	2.30pm		
10	Iau/Thurs	The Parallax View (£6 Matinee) The Third Man Starve Acre	2.30pm 5.30pm 7.45pm		



2nd & 3rd Sep
INSIDE OUT 2 (U)
Kelsey Mann, USA 2024, AD, 96mins
Pixar's latest animation returns to the mind of new teenager Riley, just as mind headquarters is undergoing a sudden demolition to make room for something entirely unexpected: new Emotions! When Anxiety shows up out of the blue, regular emotions Joy, Sadness, Anger, Fear and Disgust, who've been running a successful operation so far, now face a whole new challenge. A smart and fun family animation.



11th, 13th & 17th Sep
CHUCK CHUCK BABY (15)
Janis Pugh, UK 2022, 102mins
A feel-good romance set in working-class North Wales. Helen spends her nights packing chickens and caring for her mother. But her mundane world takes an unexpected turn with the reappearance of Joanne, her secret teenage crush. As the two begin flirting again, her zest for life begins to come back. A warm and uplifting crowd-pleaser with touches of musical whimsy, featuring the inspiring music of Neil Diamond, Janis Ian, Minnie Riperton and others.



8th - 10th Oct
THE THIRD MAN (U)
Carol Reed, UK 1949, 104mins
Europe 1949: an American writer (Joseph Cotton) arrives in post-war Vienna to visit his old friend Harry Lime (Orson Welles). But when he's told his friend was a member of the black-market criminal underworld and is now dead, he decides to set about proving Harry's innocence. Re-released for its 75th anniversary, this all-time classic features some of cinema's most memorable set pieces, and an incredibly famous opening theme that you'll never get out of your head.



2nd & 3rd Sep
KENSUKE'S KINGDOM (PG)
Neil Boyle & Kirk Hendry, UK 2023, 84mins
A new hand-drawn animated adventure, adapted from the novel by Michael Morpurgo (War Horse). A young boy, shipwrecked on a remote island, discovers he's not alone when he encounters an old Japanese soldier who retreated there after the war. As dangerous invaders appear on the horizon, it becomes clear they must join forces to save their fragile island paradise. Starring the voices of Sally Hawkins, Cillian Murphy and Ken Watanabe.



13th, 14th, 16th, 17th, 20th, 21st, 24th - 26th Sep
ALIEN ROMULUS (15)
Fede Álvarez, USA 2024, AD, 119mins
Set neatly between the first two movies, this new film takes Ridley Scott's sci-fi horror back to its roots. While scavenging the deep ends of a derelict space station, a group of space colonizers come face to face with the most terrifying life form in the universe. From the director of The Evil Dead.

**CINEMA REDISCOVERED SEASON:
OUT OF THEIR DEPTH**

The early '70s saw America increasingly in social and political turmoil. As opposition to the Vietnam war grew more violent, against the backdrop of Watergate, American values were found to be mired in corruption, scandal and lies. This season of films shows how this important period was reflected in the New Hollywood era, as the traditional male hero was replaced by a protagonist who, whilst they thought they were in control, found themselves increasingly out of their depth...

7th & 10th Oct
THE PARALLAX VIEW (15)
Alan J Pakula, USA 1974, 102mins
Conspiracy and creeping paranoia seeps through every frame of Alan J Pakula's powerful film, made two years before his definitive Watergate film All the President's Men. Warren Beatty stars as a reporter who becomes caught up in the fall out from witnessing a Presidential candidate assassination, and is drawn deeper into the corporate and political conspiracy that gradually envelopes him.

COMING IN OCT: The Long Goodbye, Three Days of the Condor.



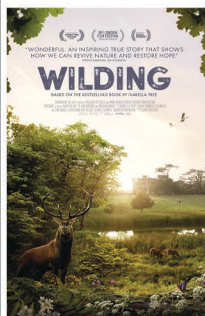
2nd, 3rd & 6th Sep
THE LADYKILLERS (PG)
Alexander Mackendrick, UK 1955, 87mins
Alec Guinness, Peter Sellers and Herbert Lom star in Ealing Studio's wonderfully dark comedy about a group of criminals posing as a string quartet, who rent a room in a sweet old lady's house while they plan their next heist. But when she discovers who they really are, they make a decision to bump her off – and soon discover it may not be as straightforward as they first thought...



13th, 16th & 17th Sep
THE MOUNTAIN WITHIN ME (12A)
Polly Steele, UK 2024, 89mins
Rugby player Ed Jackson suffered a catastrophic spinal cord injury, temporarily paralysing him from the shoulders down and changing the former Wales and England player's career forever. This inspiring mountaineering documentary follows Ed on his incredible journey to recovery as less than a year later, he attempts to overcome his life-changing injuries to climb Snowdonia, then the Alps and then finally the Himalayas.

DIGWYDDIADAU ARBENNIG
SPECIAL EVENTS

Dechrau ar amser, dim hysbysebion
Starts promptly, no adverts



3rd & 4th Sep
WILDING + Q&A
David Allen, UK 2023, 75min + 30min Q&A
Showing us how to heal a landscape against all odds, this documentary follows a young couple who bet on nature for the future of their failing, 400 yr-old estate. Battling tradition to place the fate of their farm in the hands of nature, they rip down the fences, setting the land back to the wild and entrusting its recovery to a motley mix of animals both tame and wild.

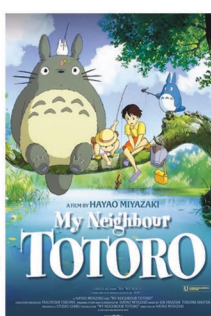


20th - 26th Sep
THE CRITIC (15)
Anand Tucker, UK 2024, 95mins
Sir Ian McKellen gives a biting performance as one of the most feared and acerbic theatre critics in town. But when he finds himself in the crosshairs of the Daily Chronicle's new owner, he lures a struggling actress into a cunning and deadly blackmail scheme to get even. Also starring Gemma Arterton, Mark Strong and Lesley Manville, this is a deliciously dark and sharp-witted thriller set in the theatre world of 1930s London.

4th & 5th Sep
NT LIVE: PRESENT LAUGHTER (PG)
Andrew Scott stars in Noël Coward's comedy, filmed at The Old Vic. 180mins.



6th, 7th 9th - 12th Sep
FIREBRAND (15)
Karim Aïnouz, UK 2023, 120mins
16th Century Tudor England: twice married and well educated Katherine Parr (Alicia Vikander) reluctantly agrees to become the sixth wife of tyrannical King Henry VIII (Jude Law), despite the terrible fate of his previous wives. When Henry leaves to fight overseas and appoints her Regent, she finds herself navigating treachery and political backstabbing as Henry's courtiers plot to turn the increasingly paranoid King against her. Also stars Eddie Marsan and Simon Russell Beale.



21st & 25th Sep, 5th, 6th & 8th Oct
MY NEIGHBOUR TOTORO (U)
Hayao Miyazaki, Japan 1988, 88mins
Re-released in UK cinemas, this is a wonderful chance to see Studio Ghibli's most famous and timeless masterpiece. When two young girls and their father move to the countryside, they find the area around their old, ramshackle home in the shadow of a giant tree, is also home to a collection of adorable forest spirits. Arguably one of the finest Japanese animations ever made, showing in English and Japanese versions.

6th Sep
BLUR LIVE AT THE WEMBLEY STADIUM
Immerse yourself in Blur's historic 2023 stadium show, in which they performed their iconic songs for 150,000 fans. 128mins



7th, 11th & 14th Sep
THE NEVERENDING STORY (U)
Wolfgang Petersen, USA 1984, 94mins
Re-released to celebrate its 40th anniversary, this beloved family film is delightful to experience up on the big screen. A lonely young boy with a love of books becomes drawn into a timeless world of fabulous creatures—a world that only he can save from certain destruction—as he discovers that he is the hero of 'The Neverending Story'. In a similar vein to Willow or Labyrinth, this is a fabulous, nostalgic fantasy for all ages.



28th Sep - 6th Oct
BEETLEJUICE BEETLEJUICE (12A)
Tim Burton, USA 2024, AD, 104mins
Tim Burton directs Michael Keaton in this new dark comedy about a family whose lives are turned upside down when rebellious teenager Astrid discovers a mysterious model that acts as a portal to the Afterlife – and the mischievous troublemaker Beetlejuice, who can't wait to unleash his very own brand of mayhem. Also stars Winona Ryder and Jenna Ortega (Wednesday).

10th (live) & 16th (encore) Sep
ROYAL OPERA & BALLET: THE MARRIAGE OF FIGARO
Mozart's comic opera is packed with plot twists, forbidden desires and unforgettable melodies, combining comedy with moments of breathtaking beauty. 240mins.



8th, 9th, 11th & 12th Sep
WIDOW CLICQUOT (15)
Thomas Napper, France 2023, 89mins
Set in 18th Century France, this period drama follows the fascinating true story behind the prestigious Veuve Clicquot Champagne, and how an astute young widow stood her ground in a male dominated society to revitalise her late husband's vineyard and create one of the most well known Champagnes in the world.



4th, 7th & 10th Oct
STARVE ACRE (15)
Daniel Kokotajlo, UK 2023, AD, 98mins
Matt Smith and Morfydd Clark star in this unnerving adaptation of Andrew Michael Hurley's folk horror novel. 1970s rural Yorkshire: a tragic event drives a wedge through a family, triggering Richard (an academic archaeologist) to become obsessed in exploring an ancient local folkloric myth rooted deep in the surrounding countryside. With its oppressive atmosphere and strong, unflinching performances by its cast, this is a powerful and haunting folk horror.

12th, 14th, 15th, 25th & 28th Sep
NT LIVE: PRIMA FACIE (15)
Jodie Comer's Olivier and Tony Award-winning performance in Suzie Miller's gripping one-woman play returns to cinemas. Tessa is a young, brilliant barrister, working her way up to be at the top of her game; defending, cross examining and winning. An unexpected event forces her to confront the lines where the law, burden of proof and morals diverge. A solo tour de force, captured live in 2022 during a sold out run at the Harold Pinter Theatre in London's West End. 126mins, no interval.

TOCYNNAU

£8.50 Pris Llawn
£7.50 / £8 Gostyngiad
£6.50 Plant o dan 12

TICKETS

£8.50 Full Price
£7.50 / £8 Concessions
£6.50 Under 12

Digwyddiadau Arbennig / Special Events: £14.50 / £16.50
NY Met: £19.50 / £21.50

Prisiau yn cynnwys ffi bwcio o £1.50
Prices include a booking fee of £1.50

DANGOSIADAU HYGYRCH ACCESSIBLE SCREENINGS

ISDEITL AU AR GYFER POBL DRWMI EU CLYW (HOH) / HARD OF HEARING SUBTITLES (HOH): Edechychwch am y symbol HOH. Look for the HOH text. Sound reinforcement available.

DISGRIFIAD CLYWEDOL / AUDIO DESCRIPTION: Mae filmiau gydag AD ym mhif rhan y daflen yn cynnwys disgrifiad clywedol drwy glustffonau ar gais. Films with AD feature audio description via headphones on request.

DANGOSIADAU RHIANT / BABI / PARENT / BABY / RELAXED SCREENINGS: : Golau isel, lfeif sain isel ac mae'n iawn i wneud swm. Yn addas i rhai efo anghenion mynediad ychwanegol. Low lighting, not too loud, and it's OK to make a noise. Also suitable for those with additional access needs.

SPIDEY SUNDAYS!

Experience the thrill on the big screen of every single live action Spider-Man! Join us every Sunday as the saga concludes this month:

SEP 1: **THE AMAZING SPIDER-MAN 2**

SEP 8: **HOMECOMING**

SEP 15: **FAR FROM HOME** (Extended version)

SEP 22: **NO WAY HOME** (Extended version)

28th Sep & 2nd Oct
MISS SAIGON (15)
This spectacular, 25th Anniversary Gala Performance of the global stage sensation tells the epic love story of a young girl, orphaned by war, who falls in love with an American GI just before the fall of Saigon. 187mins.

29th Sep & 1st Oct
MATTHEW BOURNE'S: EDWARD SCISSORHANDS (U)
Matthew Bourne's magical dance production of Edward Scissorhands, filmed live at the Wales Millennium Centre, will be the first time it's ever been seen in cinemas. Based on the classic film, Matthew Bourne brings his usual trademark wit and heartfelt storytelling to this magical dance reinterpretation. 95mins.

4th & 8th Oct
OTHELLO SHAKESPEARE'S GLOBE
Othello has risen through the ranks of the Met police. But can his hard-won reputation, his marriage to Desdemona, and his own subconscious survive the toxic systems that surround him? 16th Century Venice becomes modern-day London in Shakespeare Globe's sell-out production of Othello, captured live at the Sam Wanamaker Playhouse. 180mins.

5th Oct (live) & 11th Oct (encore)
NY MET: LES CONTES D'HOFFMAN
Offenbach's fantastical opera kicks off the Metropolitan Opera's season of Live in HD performance transmissions, starring French tenor Benjamin Bernheim in the title role of the tormented poet. 240mins approx.