


Gwanwyn
Spring
2025



CANOLFAN Y CELFYDDYDAU
ABERYSTWYTH ARTS CENTRE

“Bydde Aberystwyth
gymaint tlotach heb
Ganolfan y Celfyddydau”

“It’s so much
more than just an
Arts Centre”



“Mae'r lle yma fel ‘comfort blanket’, fy hoff le yn Aber”

“The Arts Centre is my favourite place in Aberystwyth!”

Barod am Amser da?

Mae croeso Cymreig i bawb yng Nghanolfan y Celfyddydau. O ddigwyddiadau byw i un o siopau gorau'r dref. O wersi amrywiol i'r dosbarth ioga. O'r sinema i'r arddangosfeydd celf. O'r caffi â'r olygfa o'r môr. Dyma'r lle am amser da yn Aberystwyth.

Ready for some Time well spent?

There's a Welsh welcome for everyone at the Arts Centre. From live events to one of the best shops in town. From a variety of classes to our yoga sessions. From the comfy cinema to the art exhibitions, and the Cafe with amazing views. We're the place for time well spent in Aberystwyth.

CANOLFAN Y CELFYDDYDAU
ABERYSTWYTH ARTS CENTRE



Cynnwys Contents

- 3 Theatr/Theatre
- 6 Ffilm/Film
- 8 Dawns/Dance
- 9 Barddoniaeth/Llenyddiaeth | Poetry/Literature
- 10 Teulu/Family
- 15 Comedi/Comedy
- 18 Cerddoriaeth/Music
- 21 Trawsnewid/Transform 2025
- 29 Cyn bo hir/Coming soon
- 30 Sgrinio byw/Sinema | Live Screenings/Cinema
- 32 Arddangosfeydd/Exhibitions
- 39 Dosbarthiadau a Chyrsiau/ Classes and Courses
- 42 Bwyd a Diod/Food and Drink
- 43 Siop/Shop
- 45 Gwybodaeth/Information
- 51 Dyddiadur Digwyddiadau Byw/ Live Events Diary

THEATR GYMUNEDOL ABERYSTWYTH
COMMUNITY THEATRE

The Suspicions of Mr Whicher

7 + 8 Chwefror/February 2.30pm + 7.30pm

1860 ... Plasty gwledig cain
... bachgen ifanc wedi'i
lofruddio...

Ugain mlynedd yn
ddiweddarach, mae'r Ditectif
Jonathan Whicher, sy'n cael
ei boeni gan atgofion am y
llofruddiaeth, yn ymweld â'r
llofrudd yn y carchar. Maent
yn ailedrych ar y manylion
cythryblus, gan gwestiynu
natur gwirionedd, sicrwydd a
gwaredigaeth.



Theatr Gymunedol Canolfan
y Celfyddydau Aberystwyth sy'n cyflwyno'r stori afaelgar
hon, yn seiliedig ar yr achos go iawn a gyfareddodd
gynulleidfaoedd ITV yn 2011.

1860... An elegant country house... A young boy murdered...

Twenty years later, Detective Jonathan Whicher, haunted
by the murder, visits the killer in prison. They revisit the
disturbing detail, questioning the nature of truth, certainty and
redemption.

Aberystwyth Arts Centre Community Theatre present this
gripping mystery, based on the real-life case that captivated
ITV audiences in 2011.

£15 (£13)

MEWN CYMERIAD

Congrinero

gan | by Angharad Price

12 Chwefror/February 7.45pm

Mae rhyfel yn andwyo Ewrop. Ac mae un dyn yn
wynebu argyfwng mwyaf ei fywyd.

Drama am fywyd cynnar T.H.Parry-Williams, a'r cyfnod
tyngedfennol a newidiodd y bardd a'i waith am byth.

War is raging in Europe. And one man faces the biggest
crisis of his life.

A play about the early life of T.H.Parry-Williams, and
the critical period that changed the poet and his work
forever.

£13.50 (£9.50)

PWY SY'N BERCHEN AR Y GLAW? WHO OWNS THE RAIN?

WATER
WARS

COMPANY OF SIRENS

Water Wars

4 + 5 Mawrth/March
7.45pm

Bu argáu gorfodol yr afon
Tryweryn gan ddinas Lerpwl yn
y 1960au yn aildeffro'r dyhead
am hunan-benderfyniad o fewn y
genedl Gymreig. Yn y sioe Water
Wars, mae Lloegr yn ymosod ar
Gymru i gymryd meddiant o'i
hadnoddau ac i gynnal ei hecoleg
ei hun.

Mae Water Wars yn fwy na drama
- mae'n alwad dros weithredu.

The forced damming of the
Tryweryn river by the English
city of Liverpool in the 1960s
reawakened desire for self-
determination within the Welsh.
In Water Wars, England invades
Wales to appropriate its resources
and to sustain its own ecology.

Water Wars is more than a play -
it's a call to action.

Bilingual performance. Sibrwd
language app will be available.

£9.50-£16.50

TMESIS THEATRE

SEALSKIN

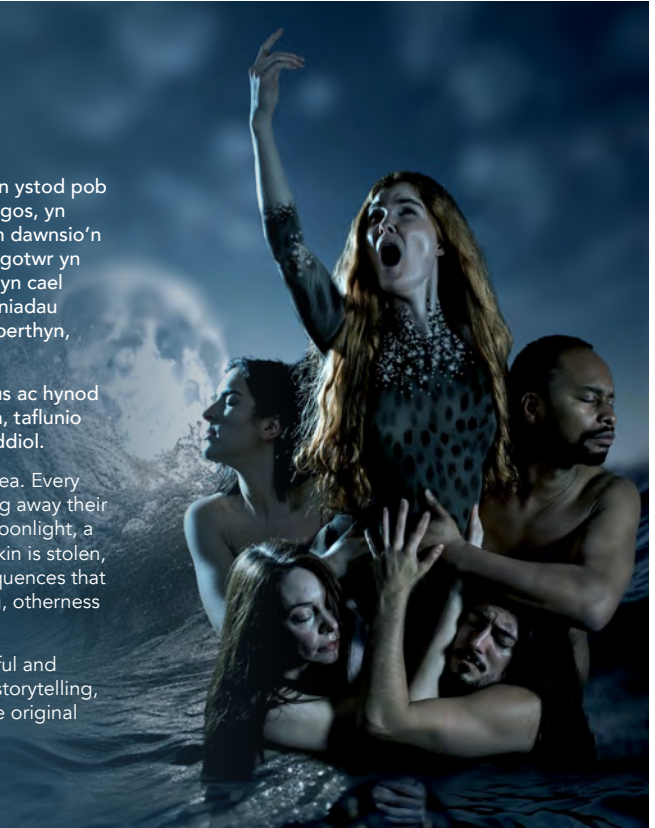
12 Mawrth/March 7.30pm

Dyma hen chwedl selci am y môr. Yn ystod pob lleud lawn mae'r Selcis yn ymddangos, yn plicio eu croen morlo i ffwrdd, ac yn dawnsio'n rhydd yng ngolau'r lleud. Mae pysgotwr yn darganfod eu cyfrinach, mae croen yn cael ei ddwyn a gwelwn y brad a'r canlyniadau sy'n dilyn, gan ystyried syniadau o berthyn, arwahanrwydd a chartref.

Mae'n cyfuno corfforoldeb chwareus ac hynod fedrus Tmesis, pypedwaith, straeon, taflunio anhygoel a cherddoriaeth fyw wreiddiol.

Sealskin is an old selkie tale of the sea. Every full moon the Selkies appear, peeling away their seal skin, they dance freely in the moonlight, a fisherman discovers their secret, a skin is stolen, and we see the betrayal and consequences that follow, exploring ideas of belonging, otherness and home.

It combines Tmesis' trademark playful and highly skilled physicality, puppetry, storytelling, incredible projection design and live original music.

£18 (£15)UPPER YOUTH THEATRE
THEATR IEUENCTID HŶN

No Regrets

21 + 22 Mawrth/March 7pm

Theatr Ieuenctid Canolfan y Celfyddydau sy'n perfformio No Regrets gan Gary McNair fel rhan o Wyl theatr genedlaethol Connections y National Theatre, 2025. Dros gyfnod o bum mlynedd, mae'r dramodydd Gary McNair wedi siarad â phobl o bob math sy'n byw mewn cyfnodau gwahanol yn eu bywydau, gan drafod y thema dyfaru gyda phob un. Mae'r ddrama yn rhannu rhai o'r canfyddiadau difyr o'r sgyrsiau hynny. O'r doniol i'r dwys, tra'n archwilio'n perthynas â phethau y dyllem wedi eu gwneud, a'r pethau ry'n ni'n dyfaru eu gwneud.

Aberystwyth Arts Centre Youth Theatre Presents No Regrets by Gary McNair as their home performance for the National Theatre Connections Festival 2025. Over the course of five years, playwright Gary McNair spoke to people at all stages and in all



walks of life on the subject of regret. This play marks the results of those conversations. A collection of scenes from the silly to the profound, that charts our relationship with the things we should have done but didn't and the things we shouldn't have done, but did.

£6

THEATR Y SHERMAN /
SHERMAN THEATRE
A HIJINX

Housemates

gan/by Tim Green

27-28 Mawrth/March

7.30pm

29 Mawrth/March

2.30pm

Mae Housemates yn ddrama gerddorol emosiynol, ddfifyr a chlodwiw am griw o ffrindiau yng Nghymru a newidiodd y byd. Dyn ifanc o Gaerdydd oedd Alan, a chafodd ei eni â syndrom Down ac wedi byw o dan ofal sefydliadol ar hyd ei oes. Ei freuddwyd oedd byw mewn tŷ a bod mewn band. Myfyriwr oedd Jim, a'i freuddwyd oedd gwneud gwahaniaeth yn y byd, ond sut? Gyda'i gilydd fel criw o ffrindiau, dechreuont ar arbrawf a nododd dechrau diwedd gofal sefydliadol a chychwyn ar y system Byw â Chymorth. Yn cael ei pherfformio gan gast cynhwysol o actorion-gerddorion niwrowahanol a niwronodweddiadol, mae Housemates yn stori i syfrdanu a chyffwrdd a'r galon.

Housemates is the moving, hugely entertaining and acclaimed musical drama telling the true Welsh story of friends who changed the world. Alan



**70s HITS PLAYED LIVE
CANEUON O'R 70au YN CAEL
EU PERFFORMIO'N FYW**



The Stage



The Guardian



Buzz

was a young man from Cardiff born with Down's syndrome who had lived his whole life in an institution. His dream was to live in a house and be in a band. Jim was a student, his dream was to make a difference in the world, but how? Together with their friends, they embarked on an experiment that marked the beginning of the end of institutionalized care and the birth of Supported Living. Performed by an inclusive cast, featuring neurodivergent and neurotypical actor-musicians, Housemates packs a punch and touches the heart.

27 Mawrth/March
Perfformiad awdio ddisgrifiad/
Audio described performance

29 Mawrth/March
BSL (Dehonglydd BSL
Interpreter - Tony Evans)

Bydd pob perfformiad
yn cynnwys capsynau /
All performances will
include captions

£20 (£18)

**£10 ar gyfer Hijinx a grwpiau/
for Hijinx and groups**



Hijinx

Un o brif gwmnïau theatr gynhwysol Ewrop, yn creu perfformiadau rhagorol gydag artistiaid ag anableddau dysgu a/awtistiaeth. Mae Hijinx yn cynnal nifer o weithgareddau yma yng Nghanolfan y Celfyddydau.

Hijinx is one of Europe's leading inclusive theatre companies, creating outstanding performances with learning disabled and/or autistic artists. Hijinx hosts a variety of activities here at Aberystwyth Arts Centre

Cysylltwch â'r criw am gyfleodd yma yn Aberystwyth /
Contact the team for opportunities here in Aberystwyth



Hijinx

02920 300331
www.hijinx.org.uk



MEWN CYMERIAD

I Am Lloyd George

4 Ebrill/April 7.45pm

Pa fersiwn o Lloyd George byddwch chi'n dewis ei gofio?

Mewn drama un cymeriad cawn ail fyw digwyddiadau mawr ym mywyd Lloyd George, un o'r Cymry mwyaf dadleuol erioed.

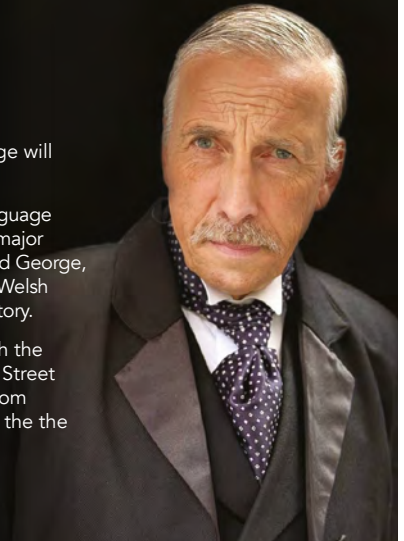
Camwch trwy ddrws rhif 10 Downing Street i gwrdd y Prif Weinidog o Lanystumdwy, a phwyso a mesur ei benderfyniadau.

Which version of Lloyd George will you choose to remember?

This one-character English language drama guides us through the major events in the life of David Lloyd George, one of the most controversial Welsh speaking Welshmen in our history.

Join us as we journey through the door of number 10 Downing Street to meet the Prime Minister from Llanystumdwy, and weigh up the the choices he made.

£13.50 (£9.50)



HAKA Entertainment

A Night of Musical Theatre

17 Ebrill/April 7.30pm

Mae HAKA yn falch iawn o ddychwelyd i'r Theatr ar gyfer eu seithfed Noson o Theatr Gerddorol! Bydd sêr byd y Theatr Gerddorol yn ymuno â thîm o arweinwyr cwrw lleol i ddod â noson gyffrous o ganeuon o'r llwyfan a'r sgrin i chi a bydd yn cynnwys myfyrwyr o'r cwrw Haka MT a gynhelir yn y tridiau cyn y digwyddiad.

HAKA Entertainment are delighted to return to the Theatre for their seventh Night of Musical Theatre! Stars of the Musical Theatre world will team up with a team of local course leaders to bring you an exciting night of songs from stage and screen and will feature students from the Haka MT course which takes place in the three days leading up to the event.

£16.50 (£14)

Ffilm | Film

Kendal Mountain Tour

27 Chwefror/February 7.30pm

Noson o Ffilmiau Antur a Siaradwr Gwadd

Ymunwch â ni ar daith trwy dirweddau mwyaf syfrdanol y byd gyda detholiad o ffilmiau arobryn sy'n arddangos campau mwyaf beiddgar y flwyddyn o ddewrder a straeon am wytnwch dynol.

Ochr yn ochr â'r casgliad o ffilmiau, ceir sgwrs gan siaradwr gwadd anhygoel - fforiwr, actifydd ac anturiwr sydd â stori unigryw ac ysbrydoledig i'w rhannu.

A Night Of Adventure Films + Guest Speaker

Join us on a journey through the world's most breathtaking landscapes with a selection of award winning films showcasing the year's most daring feats of courage and tales of human resilience.

Alongside the collection of films, will be a talk from an incredible guest speaker - an explorer, activist or adventurer with a unique and inspiring story to share.

£11.50-£19.50



NATIONAL THEATRE

Connections

12 + 14 Ebrill/April 6pm



Connections yw Gŵyl Theatr Ieuenctid flynyddol a chenedlaethol y National Theatre. Yn 30 oed, mae'n enwog am ddathlu a grymuso talentau pobl ifanc Prydain.

Yn flynyddol mae Connections yn comisiynu dramau newydd i'w perfformio gan bobl ifanc, yn ogystal â dod a dramodwyr a chynhyrchwyr theatr gorau Prydain ynghyd.

Y cwmnïau a'r dramau ar gyfer Gŵyl Connections 2025 yw:

- Canolfan y Celfyddydau Aberystwyth – No Regrets gan Gary McNair
- Theatr y Torch – Ravers gan Rikki Beadle-Blair
- Ysgol Aberconwy – Brain gan Chloë Lawrence Taylor a Paul Sirett
- The Lofts Arts – YOU 2.0 gan Alys Metcalf
- Ysgol Priory Telford – No Regrets gan Gary McNair

Connections is the National Theatre's annual, nationwide youth theatre festival. Now 30 years old, it has a history of championing the talent of young people from across the UK.

Every year, Connections commissions new plays for young people to perform and brings together some of the UK's most exciting writers with the theatre-makers of tomorrow.

The Companies and Connections plays for the 2025 festival are:

- Aberystwyth Arts Centre Youth Theatre – No Regrets by Gary McNair
- Torch Youth Theatre - Ravers by Rikki Beadle-Blair
- Ysgol Aberconwy – Brain Play by Chloë Lawrence-Taylor and Paul Sirett
- The Loft Arts – YOU 2.0 by Alys Metcalf
- Telford Priory School – No Regrets by Gary McNair

Mynediad am ddim
Admission Free

MOTIONHOUSE

HIDDEN

14 Chwefror/February

7.30pm

Mae cwmni dawns syrca Motionhouse, yn enwog ledled y byd, ac mae nhw nol yng Nghanolfan y Celfyddydau gyda'i sioe newydd, *Hidden*.

Mae *Hidden* yn archwilio sut mae goleuni'n gallu ymddangos o'r tywyllwch, hyd yn oed mewn argyfwng, ac mewn byd sy'n fwy rhanedig nag erioed.

Internationally renowned dance-circus company Motionhouse returns to Aberystwyth Arts Centre, with its brand-new production *Hidden*.

Hidden explores how, in an increasingly divided world, light can come out of darkness in times of crisis.

£11.50-£18



SRISHTI

Sevens

5 Mawrth/March 7.30pm

Triawd o ddawnsfeydd Indiaidd clasurol gyda cherddoriaeth fyw gan Nina Rajarani MBE, un o goreograffwyr mwyaf blaengar Prydain.

Mae SEVENS yn archwilio arwyddocâd arbennig y rhif saith; weithiau'n gysgredig a dro arall yn bechadurus. O'r chwareus i'r egniol, o'r eneidiol i'r meddylgar, dyma sioe ddawns drawiadol sy'n llawn emosiwn ac adloniant.

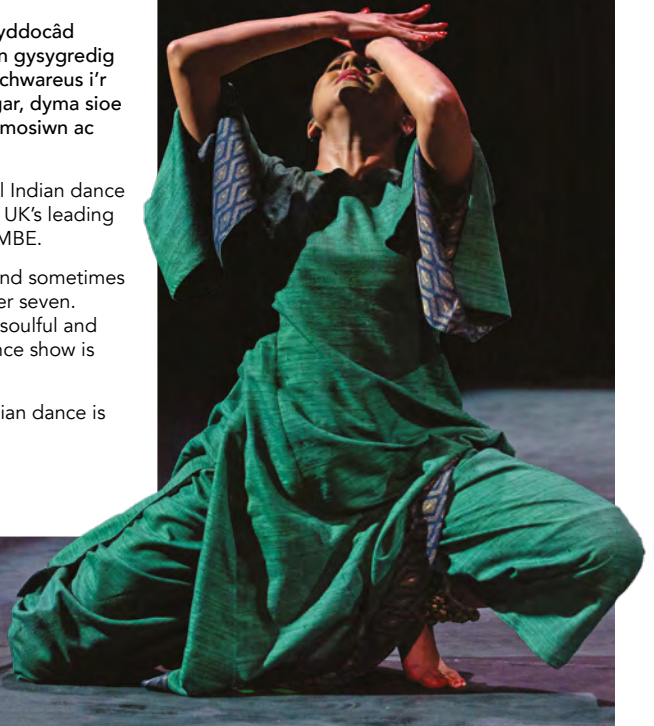
SEVENS, a triple bill of classical Indian dance with live music from one of the UK's leading choreographers Nina Rajarani MBE.

SEVENS explores the sacred, and sometimes sinful significance of the number seven. From playful and energetic, to soulful and contemplative, this striking dance show is emotional and entertaining.

"Rajarani's take on classical Indian dance is invigorating."

- The Sunday Times

£18 (£15)



Barddoniaeth • Llenyddiaeth | Poetry • Literature

Cicio'r Bar

6 Mawrth/March 7.45pm

Ymunwch â Eurig a Hywel, dau ffrind a dau fardd lleol am noson llawn hwyl, barddoniaeth a chanu yng nghwmni neb llai na'r bardd a'r eicon Twm Morys a'r diddanwyr o fry, Merched Soar.

Join local Welsh prize winning poets Eurig and Hywel for an evening of poems and singing and laughing with two great guests – the poet-troubadour Twm Morys and the entertainers par excellence from Tregaron, Merched Soar.

£11.50 (£9.50)



Yn cyflwyno'r
pantomeim blynyddol /
Proudly present the
annual pantomime

Cyfarwyddwr/Director
Richard Cheshire

Cyfarwyddwr Cerdd/
Musical Director
Elinor Powell

Coreograffwyr/
Choreographers
Lorna Lowe + Carl Ryan



Dick Whittington

AND THE PI-RATS OF THE CARIBBEAN

Dick Whittington and the Pi-Rats of the Caribbean

7-25 Ionawr/January

Mae'r Wardens yn ôl gyda'r pantomeim blynyddol a phoblogaidd!

Yn dilyn llwyddiant ysgubol 'Cinderella' y llynedd, mae nhw'n cyflwyno 'Dick Whittington and the Pi-Rats of the Caribbean', sy'n llawn jôcs a lot o hwyll!

Mae'r sioe yn serennu Richard Cheshire ac Ioan Guile, ynghyd â wynebaw cyfarwydd y Wardens Carl Ryan, Alex Neil, Julie McNicholls Vale, Donna Richards a Miriam Llwyd.

Dewch ar antur forwrol!

Following last year's critically acclaimed 'Cinderella', the Wardens are back with 'Dick Whittington and the Pi-Rats of the Caribbean', packed full of jokes and fun routines.

Featuring a cast of all ages, Richard Cheshire and Ioan Guile are joined by Wardens' stalwarts Carl Ryan, Alex Neil, Julie McNicholls Vale, Donna Richards and Miriam Llwyd.

All aboard this nautical adventure!

Suitable for all ages

£17-£23 | Tocyn teulu/Family ticket £68

HURLYBURLY THEATRE

You are the Sun

6 Chwefror/February 10.30am, 11.45am + 2.30pm

Opera i fabanod ac oedolion, wedi'i ysbrydoli gan gerddoriaeth werin ac sy'n archwilio hud byd natur.

Yn cyfuno llawenydd canu clasurol ysgafn a chwarae synhwyraidd, mae'n wahoddiad i weld prydferthwch yn y pethau lleiaf ac i adael i blanhigion ein tywys.

Dewch i ddatlu rhoddion natur a helpwch i gonsurio byd allan o anadl, dŵr, heulwen a phridd yn yr anturiaeth gerddorol hudolus hon ar gyfer plant bach 0 - 2 oed.

A folk inspired opera for babies and grown-ups that explores the magic of nature.

Combining the joy of gentle classical singing and sensory play, it is an invitation to see beauty in the smallest things and to let plants be our guides.

Celebrate the gift of nature and help to conjure a world out of breath, water, sunlight and soil in this magical musical adventure for 0 – 2 year olds.

£16.50 (£6.50)



Milkshake! Live on Holiday

26 Chwefror/February 12pm + 3.30pm

Mae Milkshake! Live yn ôl gyda sioe newydd sbon!

Ymunwch â'ch hoff frindiau Milkshake! ar Wyliau gyda Dora, Pip a Posey, Blue o Blues Clues and You!, Milo, Milkshake Monkey! a dau o gyflwynyddion Milkshake! ar gyfer anturiaeth newydd sbon!

Milkshake! Live is back with a brand-new show!

Join your favourite Milkshake! friends on Holiday with Dora, Pip and Posey, Blue from Blues Clues and You!, Milo, Milkshake Monkey! plus two of your Milkshake! presenters for an all-new adventure!

£19 (£17.50) | Tocyn teulu/Family ticket £64

RUDE SCIENCE

Gastronaut

27 Chwefror/February
11.30am + 3pm

Paratowch eich hun ar gyfer sioe newydd ffrwydrol, dechnolegol, chwyldroadol Gastronaut y BBC Stefan Gates, yn llawn styntiau gwyddonol beiddgar. Ar yr wyneb mae'n reiat o arbrofion cyfogledd sydd wedi'u hadeiladu i ddifyrru cynulleidfaoedd ifanc ond yn y bôn mae'n anturiaeth wedi'i hadeiladu'n wych, a yrrir gan y cwricwlwm, sydd wedi'i dylunio i ysbrydoli plant Prydain i ddatblygu diddordeb parhaol mewn gwyddoniaeth!

Brace yourselves for BBC Gastronaut Stefan Gates' hilarious, high-tech, high-explosive new family show, packed with science stunts and spectacular experiments. Expect enormous bottoms, f*rt machines, pee-powered fireworks and vast

whoopee cushions from this high-octane presenter of five CBBC TV series – and it's all designed to inspire young audiences with science!

£18.50 (£16.50)

Tocyn teulu/Family ticket £60



THEATR IOLO

Tidy / Taclus

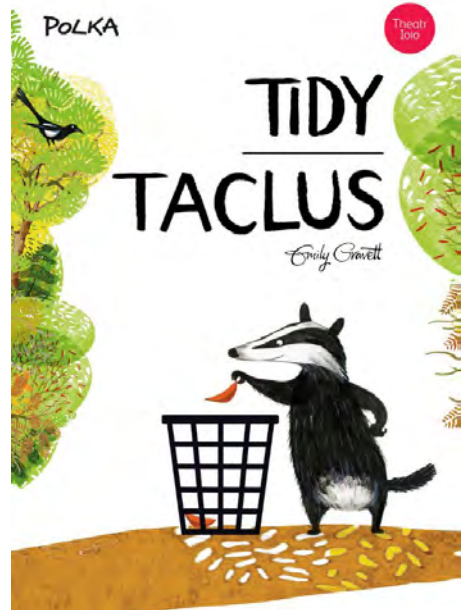
14 Mawrth/March (Ysgolion/Schools) 1pm
15 Mawrth/March (Cyhoeddus/Public)
11am (Cymraeg/Welsh)
+ 2pm (Saesneg/English)

Yn seiliedig ar y llyfr hynod boblogaidd i blant gan yr awdur a'r darlunydd Emily Gravett, mae Tidy yn chwedl sy'n ein hatgoffa ni mor bwysig yw'r byd o'n cwmpas ni a'r hyn sy'n digwydd pan na fyddwn yn gofalu amdano. Gyda phypedau hyfryd, cerddoriaeth wreiddiol a thamaid o ddwl ac anrhefn pur, dyma'r stori berffaith i ddiddanu cynulleidfaoedd ifanc.

Based on the much-loved children's book by author and illustrator, Emily Gravett, Tidy is a gentle but cautionary tale about the value of the world around us and what happens if we don't look after it. With beautiful puppets, original music and a touch of silliness, this playful story will delight young audiences, as it explores how everyone needs a little bit of wild chaos in their lives.

£8 Ysgolion/Schools | £16.50 (£13.50)

Tocyn teulu/Family ticket £40



LITTLE ANGEL THEATRE

Persephone: A Tale of the Seasons

9 Ebrill/April 10am, 11.45am + 2.30pm

Ymunwch â Persephone a'i ffrindiau sy'n anifeiliaid, wrth iddynt eich tywys chi a'ch babanod trwy'r newidiadau ym myd natur, gan gasglu pethau ar eu ffordd ... Clywch robin goch yn canu tiwn llawen, wrth iddi oeri. A fyddwch chi'n gallu dal pluen eira? Neidiwch drwy'r ddôl gyda chwningen, gwyliwch y blodau'n blodeuo. Archwiliad synhwyraidd ysgafn o'r tymhorau yw Persephone, sy'n berffaith ar gyfer babanod a phlant bach.



Join Persephone and her animal friends as they guide you and your babies through the changes in nature, collecting things on their way... Hear a robin chirp a merry tune, as it gets colder and the days draw in. Will you be able to catch a snowflake? Hop through the meadow with a bunny, watching the flowers bloom. Persephone is a gentle sensory exploration of the seasons, perfect for babies and toddlers.

£16.50 (£6.50)

THE HIGHLAND JOKER

The Bubble Show

15 Ebrill/April 2pm

Mae'r sioe swigod yn wledd i'r synhwyrau, gyda effeithiau tân, pypedwaith, sioeau golau, cerddoriaeth swynol a champweithiau swigod newydd sbon nas gwelwyd erioed o'r blaen. Camwch mewn i fyd newydd lle mae hud yn pefrio, lliwiau'n dawnsio, a 'does dim terfyn ar ddychymyg. Byddwch yn barod am deyrnas hudolus lle gwiredir breuddwydion – trwy ryfeddod a llawenydd swigod!



The bubble show is a creation, a feast for the senses, with fire effects, poetic puppetry, light-displays, captivating music and brand-new bubble masterpieces never seen before. Step into a new world where magic sparkles, colours dance, and imagination knows no bounds. Get ready to enter an enchanted realm where dreams do come true – through the wonder and joy of bubbles!

£13.50 (£10)

MEWN CYMERIAD

Roald Dahl – Dychmygwch! Roald Dahl – Imagine That!

17 Ebrill/April
11am (Cymraeg/Welsh)
2pm (Saesneg/English)

gan/by Anni Llŷn

Mae Alf yn gymeriad lliwgar, diddorol, sy'n CARU darllen. Yn ei got amryliw, sy'n llawn pocedi ar gyfer ei lyfrau, bydd Alf yn rhannu gyda'r plant ei gariad tuag at ddarllen, ac yn datgelu'r anturiaethau sy'n digwydd iddo pan mae'n dechrau darllen. Ei hoff awdur yn y byd yw Roald Dahl. Un llyfr ar y tro, bydd Alf yn cyflwyno rhai o straeon yr awdur ac yn darllen ei hoff ddarnau. Bydd yn dangos i'r plant sut mae darllen straeon fel hyn yn gwneud iddo neud pethau dwl eraill – a dyna gychwyn ar yr hwyll!

Meet Alf – a colourful, intriguing character who LOVES to read. In his multicolor coat, covered with pockets for his books, he will share with the children his love of reading, and will reveal the adventures that happen to him when he starts to read. His absolute favourite author is Roald Dahl. Book by book, Alf will present some of Dahl's stories and read his favourite parts. He will then let his imagination take over and will demonstrate how reading these stories makes him want to do other crazy things - and this is when the fun starts!

£10 (£7.50)



MEI THEATRICAL LTD

There's a Monster in Your Show

23 Ebrill/April 2pm +

24 Ebrill/April 11am

Mae anturiaethau rhyngweithiol Tom Fletcher ar gyfer pawb sydd â dychymyg bywiog yn llamu o'r dudalen i'r llwyfan wrth i'r gyfres boblogaidd 'Who's in Your Book?' ymddangos am y tro cyntaf fel sioe gerdd newydd sbon. Mae grŵp o berfformwyr yn paratoi i gychwyn eu sioe, ond yn fuan maent yn darganfod mai nid y nhw yw'r unig rai ar y llwyfan. Mae'r Anghenfil Bach eisiau bod yn rhan o'r hwy! hefyd!

Tom Fletcher's interactive adventures for big imaginations are leaping from page to stage, as the beloved 'Who's in Your Book?' series makes its debut as a brand-new musical show. Expect plenty of fun for your littlest ones as their favourite characters, including Monster, Dragon, Alien and Unicorn, come to life in a show that is packed with playful moments to enjoy together. There's a Monster in Your Show... and he can't wait to meet you!

£16.50 (£14.50)

Tocyn teulu/Family ticket £50



We loved the TEULU/FAMILY exhibition by Aberystwyth Arts Centre. Co-creating an exhibition with local families was really ambitious and it was so vibrant and inviting.

Zoe Dennington, Beirniad/Judge.



Teulu / Family

Enillydd Gwobr Gweithgaredd Celfyddydol Orau i Deuluoedd, Gwobrau Gwych i'r Teulu, 2024.

Thanks to you we won the Best Family Arts Activity Award in the Fantastic for Families Awards 2024.

Rhod Gilbert and The Giant Grapefruit

30 + 31 Ionawr/January 8pm

Pan mae bywyd yn taflu lemons at Rhod ...

Yn ei sioe olaf 'The Book of John', 'roedd Rhod yn delio gyda chynnod digon llwm, ac idiot o'r enw John. Ychydig a wyddai fod pethau ar fin troi'n fwy sur ... Ond nid yw Rhod yn chwewr; mae'n bownsio'n ôl ac yn teimlo'n arbennig. Yn ddoniol o dywyll, yn angerddol ac yn rhy bersonol o lawer, dyma Gilbert ar ei orau, yn gwasgw pob diferyn olaf allan o heriau diweddaraf bywyd ... gydag ychydig o help gan hen wrthwynebydd.

When life gives Rhod lemons...

In his last show 'The Book of John', Rhod was dealing with some pretty pungent life citrus, and an idiot called John. Little did he know that things were about to turn even more sour... But Rhod's not bitter; he's bouncing back and feeling remarkably zesty. Hilariously dark, passionate and way too personal, this is classic Gilbert, squeezing every last drop out of life's latest curveballs...with a little help from an old adversary.

£36.50

WEDI
GWERTHU
ALLAN!
SOLD OUT!



Maisie Adam: Appraisal

8 Chwefror/February 8pm

Yn ffres o Live At The Apollo, A League Of Their Own a Have I Got News For You, mae Maisie Adam ar daith gyda'i sioe Appraisal.

Mae wedi bod yn gweithio fel digrifwraig ers pum mlynedd bellach felly mae'n bryd iddi gael adolygiad swydd. Ymunwch â hi ar gyfer yr adolygiad. Byddwch unai'n gweld yn union pam yr enillodd Act Newydd Orau a'i henwebu'n Newydd-ddyfodiad Gorau...neu, fe welwch yrwun sydd angen "ail-strwythuro cyfundrefnol".

Gwelwn ni chi yn y gwerthusiad, mae hi'n edrych ymlaen at eich gweld, Cofion gorau!!!

Fresh from Live At The Apollo, A League Of Their Own and Have I Got News For You, Maisie Adam is heading back out on tour with her show Appraisal.



She's five years into her job as a comedian now, so she's due an appraisal. Join her for the ultimate performance review, where you'll either see just why she was awarded Best New Act and nominated Best Newcomer... or, you'll see someone who's ready for "organisational restructure".

See you at the appraisal, she looks forward to seeing you, kindest regards!!!

£22.50

Mark Thomas: Gaffa Tapes

15 Chwefror/February 7.30pm

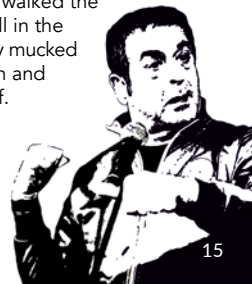
Yn ei amser mae wedi ennill llwyth o wobrau, gorfodi gwleidydd i ymddiswyddo, newid y gyfraith ar dreth a phrotestio, ei gynnwys yn y Guinness Book of Records am dorri record y byd am y nifer o brotestiadau mewn 24 awr, cymryd yr heddlu i'r llys 3 gwaith ac ennill, cerdded ar hyd Wal Israel yn y Lan Orllewinol, ac yn gyffredinol chwarae o gwmpas yn ceisio cael hwy! a diflasu'r bobl iawn.

Mae'r sioe hon yn cynnwys mwy o'r uchod.

In his time he has won awards (current total is now officially 'f***loads'), forced a politician to resign, changed laws on tax and protest, become Guinness Book of Records world record holder for number of protests in 24 hours, taken the police to court 3 times and won, walked the length of the Israeli Wall in the West Bank and generally mucked about trying to have fun and f*** the right people off.

This show is more of the above.

£20 (£13.50)



Clwb Comedi Comedy Club

26 Chwefror/February 8pm
26 Mawrth/March 8pm

Mae Little Wander mewn cydweithrediad â Chanolfan y Celfyddydau Aberystwyth yn cyflwyno dwy noson o gomedi gwych sy'n nodweddu rhai o ddigrifwyr mwyaf blaenllaw'r DU!

Little Wander yw'r tîm y tu ôl i wyliau comedi poblogaidd Machynlleth ac Aberystwyth.

Little Wander in association with Aberystwyth Arts Centre bring you two nights of fantastic comedy featuring line ups from some of the UK's top comedians!

Little Wander are the team behind the legendary Machynlleth and Aberystwyth comedy festivals.

Drysau/Doors 7.30pm, sioe/show 8pm
£13.50 (£11.50)



ABERYSTWYTH



Miles Jupp: On I Bang

7 Mawrth/March 7.30pm

Chwedl am ryfeddod, ofn, lwc, cariad a staff meddygol cymwys.

Mae Miles wedi ymddangos ar sawl pennod o Frankie Boyle's New World Order, Have I Got News for You ac wedi chwarae rhan Ymerawdwr o Awstria ac Ewrop yn Napoleon gan Ridley Scott.

"Y sioe lawen hon am wynebu marwolaeth yw ei orau eto" Y Times ****

A tale of surprise, fear, luck, love and qualified medical practitioners.

Miles has appeared in many episodes of Frankie Boyle's New World Order, Have I Got News For You and played The Emperor of Austria and Europe in Ridley Scott's Napoleon.

"Joyful show about near death is his best yet" The Times ****

£26.50



Alfie Moore: A Face for Radio

4 Ebrill/April 7.30pm

Mae 30 mlynedd o waith shifft, a chael ei ddyrnu yn ei wyneb, wedi gadael Alfie gydag 'wyneb i'r radio'. Wyneb oedd â stori, ond nad oedd wedi cael llawer o sylw o ran cynnal a chadw! Arweiniodd newid annisgwyl yn ei yrfa at weld Alfie canol oed yn gadael yr heddlu ac yn troi'n seren radio gyda'r BBC. Ond a oedd yn gallu ymdopi ag enwogrwydd?

Thirty years of shift-work, and being punched in the face, had left 'Fair Cop' Alfie with a 'face for radio'. A face not so much 'lived in' as inhabited by squatters with little regard to property maintenance! A surprising career shift turned middle-aged Alfie from street cop to BBC 4 radio star. But when TV fame beckoned could he grasp it or was it past it?

£21.50

Chris McCausland: Yonks!

25 Ebrill/April 8pm

Sioe newydd i 2025! Efallai eich bod wedi ei weld ar Strictly, Scared of the Dark, Would I Lie to You, Have I Got News for You, The Royal Variety, QI, Blankety Blank, The Last Leg, a llwyth o raglenni eraill. Mae wedi cael ei alw yn "llwyddiant dros nos" – er ei fod wedi bod yn gwneud hyn ers 'yonks' bellach! Mae Chris McCausland yn mynd ar daith gyda dosbarth-meistr arall mewn comedi stand-yp. Gwerthwyd pob tocyn ar gyfer y daith ddiwethaf, felly amdani!

A brand-new show for 2025! You might have seen him on Strictly, Scared of the Dark, Would I Lie to You, Have I Got News for You, The Royal Variety, QI, Blankety Blank, The Last Leg, and tons more as well. He's been called an "overnight success" – even though he's been doing this for yonks! Chris McCausland is hitting the road with another masterclass in stand-up comedy that has literally been yonks in the making - the last tour was a sell-out, be quick!

£31.50



Bar y Theatr/ Theatre Bar

Mwynhewch ddiod ym mar y theatr cyn eich sioe neu yn yr egwyl. Gwnewch y mwyaf o'r amser da wrth archebu eich diodydd i'r egwyl ymlaen llaw.

Enjoy some pre show drinks and interval drinks at our theatre bar. Beat the crowds and pre- order your interval drinks too, that's time well spent.



CYMEITHAS GORAWL ABERYSTWYTH
CHORAL SOCIETY

Brahms' Requiem

25 Ionawr/January 7.30pm

Cerddoriaeth orau'r byd yn cael ei berfformio gan gôr o safon, unawdwy'r gwych a cherddorfa arbennig. Dewch i fwynhau amser da a cherddoriaeth hyfryd gan gynnwys y Requiem llawn hapuswydd gan Brahms.

Nothing beats the choral experience – the world's finest music performed by an outstanding choir, world class soloists and a fine orchestra. Brahms' Requiem is a wonderful piece; gloriously uplifting, with its emphasis on joy, written in the language of the people – sung in its usual English adaptation.

£4.50-£16.50



Mynediad am ddim

1 Chwefror/February 7.30pm

Dechreuodd y daith yma ym 1974 yng Ngholeg Prifysgol Aberystwyth, a daw taith hanner canrif Mynediad am Ddim i ben yma yn Aberystwyth. Bu'r grŵp poblogaidd wrthi'n diddannu cynulleidfaoedd Cymru a thu hwnt yn ddi-dor ers 50 mlynedd, ac ar ôl taith lwyddiannus i ddathlu'r garreg filltir daw'r pinacl yma i'r Neuadd Fawr.

The journey began here in 1974 at Aberystwyth University College. The journey of half a century of Mynediad am Ddim also ends here in Aberystwyth. The popular group has been entertaining audiences across Wales and beyond continuously for 50 years and after a successful tour to celebrate the milestone comes the pinnacle, back to where it all started.

£21.50

Xiaowen Shang & Charlotte Spruit

2 Chwefror/February 3pm

Mae'r feiolinydd Charlotte Spruit, enillydd Wobr YCAT y Gystadleuaeth Leipzig Bach, ac yn 'Rising Star' Classic FM, yn ymuno â phianydd 'Rising Star' BBC Music Magazine Xiaowen Shang a ryddhaodd ei halbwm cyntaf gyda Linn Records yn ddiweddar. Gyda'i gilydd, maent yn cyflwyno rhaglen gyffrous yn cynnwys Sonata K. 304 Mozart, Sonata Rhif 10 Beethoven, Arietta gan Huw Watkins, a Sonata Rhif 2 Schumann.

Violinist Charlotte Spruit, winner of the Leipzig Bach Competition, YCAT Award, and a Classic FM Rising Star, joins forces with BBC Music Magazine Rising Star pianist Xiaowen Shang, who recently released her debut album with Linn Records. Together, they bring an exciting program featuring Mozart's Sonata K. 304, Beethoven's Sonata No. 10, Huw Watkins' Arietta, and Schumann's Sonata No. 2.

£16.50 (£14.50)



HANDSHAKE LTD PRESENTS

OH WHAT A NIGHT!

THE ULTIMATE CELEBRATION OF
Frankie Valli And The Four Seasons!
SHERRY • LET'S HANG ON • CAN'T TAKE MY EYES OFF YOU • WHO LOVES YOU

HANDSHAKE LTD

Oh What a Night!

7 Chwefror/February 8pm

Mae OH WHAT A NIGHT! yn mynd â chi ar siwrne gerddorol trwy yrfa Frankie Valli a'r Pedwar Tymor.

Yn cynnwys y caneuon poblogaidd; Sherry, Let's Hang On, Big Girls Don't Cry, Can't Take My Eyes Off You, a llawer mwy.

Peidiwch â methu'r dathliad eithaf hwn o un o fandiau Roc a Rôl gorau'r byd!

OH WHAT A NIGHT! takes you back in time on a musical journey through the incredible career of Frankie Valli & The Four Seasons.

Featuring songs; Sherry, Let's Hang On, Big Girls Don't Cry, Can't Take My Eyes Off You, and many, many more.

The ultimate celebration of one of the world's greatest Rock & Roll bands.

£26.50 (£24.50)



SINFONIA CYMRU

Music of the Heart

14 Chwefror/February 7pm

Mae amser da o'ch blaen yn y gyngerdd syfrdanol hon dan gyfarwyddyd Hyeyoon Park, y fiolinydd ryngwladol.

O biazas prysur a rhamant Florence, lle cyfansoddodd Tchaikovsky ei Souvenir de Florence, i brydferthwch tawel yr afon sy'n gwahanu cefn gwlad Cymru a Lloegr yn A Severn Rhapsody gan Finzi, i Bedwarawd Llynynnol angerddol o gwefreiddiol Fanny Mendelssohn.

Byddwch hefyd yn dyst i berfformiad cyntaf fersiwn Sinfonia Cymru o Concerto Beethoven i'r Ffidil ar gyfer cerddorfa siambur.

This stunning concert, directed by internationally award-winning violinist Hyeyoon Park, really is time well spent.

From the bustling piazzas and romance of Florence, where Tchaikovsky composed his Souvenir de Florence, to the tranquil beauty of the river that separates the Welsh and English countryside in Finzi's Severn Rhapsody, to Fanny Mendelssohn's impassioned and moving String Quartet.

You'll also experience the premiere of Sinfonia Cymru's version of Beethoven's Violin Concerto for chamber orchestra.

£4.50-£19.50

HARDER ROCK PRODUCTIONS

UK Rock Show

15 Chwefror/February 8pm

Paratowch i gael eich cludo'n ôl i'r 80au, oes aur roc clasurol, mewn sioe sy'n cyfuno teimlad gŵyl roc gydag awyrgylch sioe roc arena o'r safon uchaf. Gallwch ddisgwyl tân gwyllt, fflamau, goleuo anhygoel a chyflwyniad manwl a chywir wrth i'r band 5-darn gwych hwn, sydd â nifer helaeth o gredydau recordio ac sydd wedi teithio i bob rhan o'r byd, ail-greu caneuon cewri'r byd roc megis Journey, Aerosmith, Def Leppard, Bon Jovi, Kiss, AC/DC, Van Halen a llawer mwy.

Get ready to be transported back to the 80s heyday of classic rock, combining the feel of a rock festival with the atmosphere of a top end rock arena tour. Expect fireworks, flames, amazing lighting and exacting attention to detail as this amazing 5-piece band, who have numerous recording credits and having travelled the Globe extensively, recreate hits from rock gods such as Journey, Aerosmith, Def Leppard, Bon Jovi, Kiss, AC/DC, Van Halen and many more.

£26.50 (£23.50)



FOCUS WALES & CANOLFAN Y CELFYDDYDAU ABERYSTWYTH ARTS CENTRE
YN CYFLWYNO : PRESENTS...

TRAWSNEWID : TRANSFORM 2025

A UNIQUE FESTIVAL OF AUDIO VISUAL EXPLORATION
GŴYL UNIGRYW O ARCHWILIO CLYWELEDOL

DYDD GWENER / FRIDAY

CVC

DAS KOOLIES | ISLET |
KIZZY CRAWFORD |
MARI MATHIAS | PYS MELYN |
FFENEST | SIULA |
MISSING PERSONS BUREAU DJS |
+ MWY : MORE

DRYSAU'N AGOR : DOORS OPEN 5:30PM

DYDD SADWRN / SATURDAY

FAT DOG

MELIN MELYN | TARA BANDITO |
MACE THE GREAT | MELLT |
AFRO CLUSTER | ANI GLASS |
SEAZOO | GILLIE |
RED TELEPHONE | ADJUA | EYE |
MWSOG | DJ DILYS |
+ MWY : MORE

DRYSAU'N AGOR : DOORS OPEN 1:00PM

CHWEFROR 21 & 22 FEBRUARY

CANOLFAN Y CELFYDDYDAU ABERYSTWYTH ARTS CENTRE

TOCYNNAU: TICKETS: ABERYSTWYTHARTSCENTRE.CO.UK

14+



CANOLFAN Y CELFYDDYDAU
ABERYSTWYTH ARTS CENTRE

FOCUS
WALES

Rotary

Ardal Aberystwyth



Cyngerdd Gŵyl Dewi St David's Concert

28 Chwefror/February 7pm

Clwb Rotary Ardal Aberystwyth sy'n cyflwyno dathliad Gŵyl Dewi gyda thalentau lleol, er budd elusennau.

Arweinydd: Ioan Guile

Perfformiadau gan Sgarmes, Côr Meibion y Mynydd, Côr ABC, Seindorf Arian Aberystwyth, Ensemble Telynnau Gwasanaeth Cerdd Ceredigion a llu o artistiaid eraill.

Ardal Aberystwyth Rotary Club present a St David's Concert with a swathe of local talent in aid of charity.

Compere: Ioan Guile

Performances from Sgarmes, Meibion y Mynydd Choir, Côr ABC, Aberystwyth Silver Band, Ceredigion Music Service Harp Ensemble and a host of other artists.

£16.50

The Apex Singers

2 Mawrth/March 4pm

Ymunwch â ni ar daith o ganeuon gwerin a straeon byd-eang gyda'r Apex Singers, yr ensemble lleisiol sydd wedi ennill canmoliaeth frwd gan adolygwyr. Mae sain nodweddiadol yr wyth o gantorion yn cyfuno elfennau cerddoriaeth gorawli glasuro, cerddoriaeth werin draddodiadol, ac acappella cyfoes. Yn adnabyddus am eu harmonïau cywrain a'u halawon hyfryd, mae'r cyngerdd byw hwn yn addo profiad bythgofiadwy.

Embark on a journey of global folk songs and storytelling with The Apex Singers, the critically acclaimed vocal ensemble. The eight singers' distinctive sound combines elements of classical choral music, traditional folk, and contemporary a cappella. Known for their intricate harmonies and gorgeous melodies, this live concert promises an unforgettable experience. "It genuinely floors us at times that humans can sound this beautiful!" - The Manc

£21.50 (£16.50)



The Dazzling Diamonds

6 Mawrth/March 7.30pm

Mae'r Dazzling Diamonds yn dod i Ganolfan y Celfyddydau i berfformio sioe ddrag gomedi newydd sbon. O ganeuon dawns rhyfeddol i berfformiadau lip-sync a chanu byw anhwygoel, mae'r cast yma i'ch cyfareddu a gwneud hon yn sioe i'w chofio.

Bachwch eich ffrindiau, gwisgwch yn glam a dewch i fwynhau noson o glitz a glamour yma yng Nghanolfan y Celfyddydau.

The Dazzling Diamonds are coming to the Arts Centre to perform a brand-new comedy variety drag show. From jaw-dropping dance numbers to hilarious lip-sync performances and sensational live vocals, the cast are pulling out all the stops to make this show a show to remember.

Gather your friends, put on a fabulous outfit, and join us for a night of glitz, glamour, and pure entertainment.

Canllaw Oedran/Recommended Age 14+

£26.50



UPROAR

Ligeti's Chamber Concerto plus new music from Wales

7 Mawrth/March 8pm

Mae ensemble UPROAR, sy'n cynnwys 16 o unawdwyr meistrrolgar, yn parhau i wthio ffiniau cerddoriaeth newydd o Gymru gyda thri chomisiwn newydd gan David John Roche, Litang Shao ac Ashley John Long. Perfformir Concerto Siambur gan Ligeti (y cyfansoddwr Hwngaraidd-Awstriaidd sy'n enwog am ei gerddoriaeth yn y ffilm 2001: A Space Odyssey) am y tro cyntaf yng Nghymru ac felly hefyd Hrim, atgof grymus Anna Thorvaldsdottir am bwerau elfennol.

UPROAR's ensemble of 16 virtuoso soloists continues to push the boundaries of new music from Wales with three new commissions from David John Roche, Litang Shao and Ashley John Long. The Chamber Concerto by Ligeti (ground-breaking Hungarian-Austrian composer widely recognised for his music in the film 2001: A Space Odyssey) gets its Welsh Premiere as does Hrim, Anna Thorvaldsdottir's potent evocation of elemental power.

£17.50 (£6.50)





CERDDORFA GENEDLAETHOL CYMRU Y BBC NATIONAL ORCHESTRA OF WALES

Shostakovich 9 with Christoph König

13 Mawrth/March 7.30pm

Mae 2025 yn nodi 50 mlynedd ers marwolaeth Shostakovich, felly i ddatlu ei fywyd mae BBC NOW yn mynd â'i Nawfed Symffoni ar daith, ochr yn ochr â Glasslands Anna Clyne gyda'r ddiglyffelyb Jess Gillam a Le Tombeau de Couperin gan Ravel, gwaith eiconig i wrandawyr ers cenedlaethau.

2025 sees the 50th anniversary of Shostakovich's death, so in celebration of his life BBC NOW take his firecracker Ninth Symphony on the road, alongside Anna Clyne's Glasslands with the inimitable Jess Gillam and Ravel's Le Tombeau de Couperin, a work iconic to listeners for generations.

£6.50-£16.50

What's Love Got To Do With It?

15 Mawrth/March 8pm

Yn dilyn taith gyntaf wych a werthodd allan ledled y DU, bydd ffans Tina Turner wrth eu bodd gyda'r sioe deyrnged hon What's Love Got To Do With It?. Mae'n dathlu cerddoriaeth y gantores roc ac enaid anhygoel hon. Gallwch ddisgwyl noson llawn hwyl ac egni wrth i'r sioe lawen hon nodweddu'r holl fferynnau yn cynnwys Private Dancer, Proud Mary, Simply The Best a llawer mwy.

After a fantastic sell out debut tour across the UK, Tina Turner fans will have the time of their lives as What's Love Got To Do With It? celebrates the music of this incredible rock and soul legend. Expect a night of high energy as this joyous show features all the hits including Private Dancer, Proud Mary, Simply The Best and many more.

£31.50

WHAT'S LOVE GOT TO DO WITH IT?

THE ULTIMATE TRIBUTE TO TINA TURNER





HANDSHAKE LTD

Bronwen Lewis

21 Mawrth/March 8pm

Wedi hir ddisgwyl, mae seren BBC Radio Wales, Bronwen Lewis, yn dychwelyd i Ganolfan y Celfyddydau gyda'i thaith 'Big Night In'.

Mae'r aml-offerynwraig sydd mor boblogaidd ar Tik-Tok yn edrych ymlaen yn fawr at rannu ei chaneuon a straeon newydd gyda chi, a berfformir ochr yn ochr â ffefrynnau o'i halbymau blaenorol a'i fersiynau unigryw hi o glasuron traddodiadol Cymreig.

BBC Radio Wales star Bronwen Lewis returns to the Arts Centre with her 'Big Night In' tour.

The multi-instrumental playing Tik-Tok sensation can't wait to share her new songs and stories with you, which she will perform alongside fan favourites from previous albums and much-loved covers of traditional Welsh classics.

£19-£36.50

Ryan Young

21 Mawrth/March 7.30pm

Gan ganolbwyntio ar gerddoriaeth draddodiadol yr Alban, mae Ryan yn dod â bywyd newydd i hen alawon, trwy eu chwarae yn ei ffordd unigryw ei hun. Mae ei ddawn ar y ffidil yn frith o syniadau melodig ffres, egni rhythmig dyrchafol a dyfnder gwyth o ddeinameg a manwl gywirdeb. Mae ei sain yn nodweddiadol ac yn mynd â'r gwrandawr ar daith emosïynol ac anturus.

Focusing on traditional Scottish music, Ryan brings new life to very old, often forgotten tunes by playing them in his own unique way. His fiddle playing is brimming with fresh melodic ideas, an uplifting rhythmic drive and a great depth of dynamics and precision. His sound is very distinctive and takes the listener on an emotional and adventurous journey.

£17.50 (£15.50)



RML PRESENTS

THE MERSEY BEATLES



The Mersey Beatles

22 Mawrth/March 8pm

Ffans y Beatles, byddwch yn barod i gael eich syfrdanu gan hoff fand teyrnged y byd (a anwyd yn Lerpwl!!)

Mae'r Mersey Beatles wedi bod yn difyrru cynulleidfaoedd orlawn gyda'u sioeau ledled y byd ers 1999 gyda'u dathliad gwirioneddol gywir a chlodwiw o gerddoriaeth John, Paul, George a Ringo.

Fans of The Beatles prepare to be wowed by the world's favorite Liverpool-born tribute to the Fab Four!

The Mersey Beatles have been rocking sold-out shows around the globe since 1999 with their truly authentic and widely acclaimed celebration of John, Paul, George and Ringo.

£28.50

Philomusica Aberystwyth

29 Mawrth/March 7pm

Arweinydd/Conductor: Iwan Teifion Davies

Symffoni gerddorfaol Aberystwyth sy'n cyflwyno rhaglen o gerddoriaeth Americanaidd a chyffrous.

Florence Price oedd y ddynes Affrica - Americanaidd gyntaf i ennill statws cenedlaethol fel cyfansoddwr symffoni, mae John Adams yn disgrifio ei 'Short Ride in a Fast Machine' fel ffanffer ar gyfer cerddorfa. Mae Appalachian Spring gan Copland fel dathliad briodasol, tra mae Rhapsody in Blue gan Gershwin yn cyfuno jazz a dylanwadau o un o ddarnau agoriadol enwocaf y clarinet.

Aberystwyth's very own symphony orchestra present a programme of exciting American music.

Florence Price was the first African American woman to gain national status as a symphonic composer, John Adams describes his 'Short Ride in a Fast Machine' as a 'fanfare for orchestra. Copland's Appalachian Spring depicts a wedding celebration whilst Gershwin's Rhapsody in Blue combines jazz influences and one of the most famous opening clarinet glissandos.

£2-£13.50



The Undercover Hippy

3 Ebrill/April 8pm

Mae'n edrych fel mai prif ddiddordeb yr Undercover Hippy yw gwneud i bobl feddwl, chwervthin a dawnsio ar yr un pryd. Wedi'i ddisgrifio gan Tom Robinson (BBC6Music) fel "plentyn-cariad Steel Pulse, Kate Tempest a'r Sleaford Mods", mae ei gerddoriaeth yn dwyn ynghyd negeseuon pwerus, rhythmau reggae heintus, a chyflwyniad telynegol slic.

The Undercover Hippy appears to be on a mission to make people think, laugh, and dance simultaneously. Described by Tom Robinson (BBC6Music) as being "like the love-child of Steel Pulse, Kate Tempest and The Sleaford Mods", his music brings together powerful messages, infectious reggae rhythms, and a fast-paced lyrical delivery.

£17.50 (£15.50)



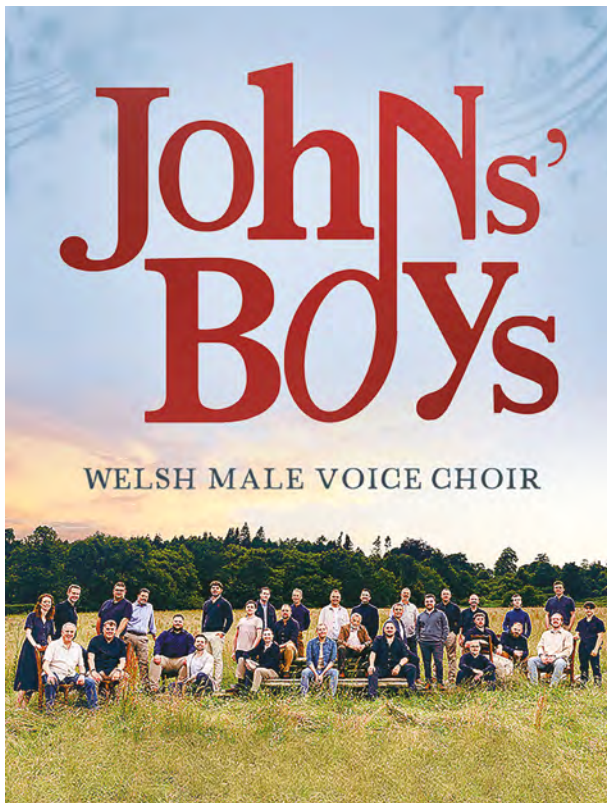
John's Boys

5 Ebrill/April 7.30pm

Mae Côr Meibion Johns' Boys yn dod â thro modern, arloesol i'r Côr Meibion Cymreig traddodiadol. Mwynhewch eu fersiynau trawiadol nhw o ffefrynnau'r siartiau, opera, caneuon y sioeau cerdd, clasuron adnabyddus ac alawon emyn traddodiadol. Mae'r côr wedi ennill miliynau o ddilynwyr newydd ers ymddangos ar sioeau byw Britain's Got Talent ac fe'u disgrifiwyd gan Simon Cowell fel "Côr bendigerdig. 'Dwi wrth fy modd!'".

Johns' Boys Welsh Male Voice Choir brings a groundbreaking, modern twist to the traditional Welsh Male Voice Choir. Enjoy breathtaking chart hit covers, opera, musicals, well known classics and traditional hymn tunes. The choir have gathered millions of new followers since appearing on the live shows of Britain's Got Talent and were described by Simon Cowell as "a brilliant choir. I love them!".

£26.50 (£23.50)



Gareth Owen

11 Ebrill/April 7pm

Mae Gareth Owen yn banydd sydd wedi ymddangos dros y Deyrnas Unedig, gan gynnwys Neuadd Wigmore, y Barbican, Neuadd Dewi Sant, Caerdydd a'r Sala Mozart, Zaragoza. Mae Gareth hefyd wedi perfformio mewn gwyliau rhyngwladol yn Ffrainc a'r Swistir, gan gynnwys Gŵyl Verbier. Mae'n enillydd gwobrau niferus yn y DU.

Gareth Owen is a pianist who has made appearances in venues across the United Kingdom, including the Wigmore Hall, Barbican, St. David's Hall, Cardiff and the Sala Mozart, Zaragoza, he has also performed at international festivals in France and Switzerland, including the Verbier Festival. A winner of numerous prizes in the UK, he was last seen in Aberystwyth as soloist with Philomusica in 2023.

£16.50 (£14.50)



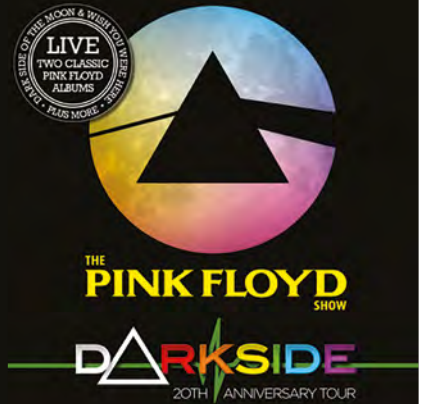
Darkside: The Steel Breeze Tour

12 Ebrill/April 8pm

Bydd 2025 yn flwyddyn arbennig i Darkside, sef sioe Pink Floyd, wrth iddynt ddathlu ugain mlynedd o fod ar y ffordd. Yn y cyfnod hwnnw maent wedi perfformio mewn mannau ysblennydd, gan gynnwys Clawdd Offa, Eglwys Gadeiriol Wells, a pherfformiad unigryw o The Dark Side of the Moon yn y Ganolfan Ofod Genedlaethol, i enwi ond ychydig. Bydd y sioe yn cynnwys perfformiadau llawn o Wish You Were Here, i nodi hanner canmlwyddiant yr albwm anhygoel hwnnw, a'r gwaith arloesol The Dark Side of the Moon.

2025 is a special year for Darkside, the Pink Floyd show, as they celebrate twenty years of being on the road. In that time they have performed in some spectacular places, including Offa's Dyke, Wells Cathedral, and unique performances of The Dark Side of the Moon in the National Space Centre, to name but a few. The show will include complete performances of Wish You Were Here, to mark the 50th anniversary of this stunning album, and the seminal work that is The Dark Side of the Moon.

£26.50



Cymdeithas Gorawl Aberystwyth Choral Society

26 Ebrill/April 7.30pm

Cymdeithas Gorawl Aberystwyth yw côr mwyaif Aberystwyth, sydd bellach yn cynnwys cantorion ifanc o Brifysgol Aberystwyth. Dyma'r unig gôr yn yr ardal sy'n cyflwyno perfformiadau ar raddfa lawn o gerddoriaeth gorawl orau'r byd – dyna beth sy'n eu gwneud yn wahanol.

Aberystwyth Choral Society is Aberystwyth's largest choir, now including young choristers from Aberystwyth University. They are the only ones hereabouts presenting full-scale performances of the world's great choral music – and that's what makes them different.

£4.50-£16.50

Cyn bo hir.. | Coming soon...

THEATR IEUENCTID - ABERYSTWYTH ARTS CENTRE YOUTH THEATRE PRESENT

The Addams Family

2.5.25 – 19:00

3.5.25 – 14:00 + 19:00

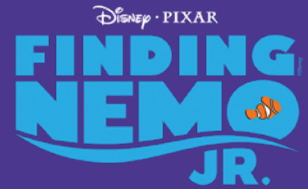


YSGOL BERFFORMIO - ABERYSTWYTH ARTS CENTRE STAGE SCHOOL PRESENT

Finding Nemo Jr

13.6.24 – 19:00

14.6.24 – 14:00 + 19:00



07/05

Mike Peters: Love, Hope, Strength



15/05

Kroke



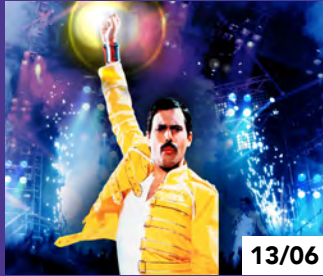
20 + 21/05

Farm Boy



30/05

Puffing Percy



13/06

Killer Queen



19/06

Aled Jones – Full Circle



21/06

Amazing Animals



29/11

Re – Take That

Am y ffilmiau diweddaraf, clasuron a mwych ewch i'n gwefan i weld yr amserlen sinema fisol, neu galwch mewn am gopi - esgus am amser da!

For new films, classics and more check out our monthly cinema listings on our website or pop in for a timetable - time well spent!

aberystwythartscentre.co.uk/cinema



Sgriniadau byw | Live Screenings

Mae ein sgrinidau byw o'r Theatr Genedlaethol, y New York Met a'r Opera Brenhinol, yn ein sinema gyfforddus yn gyfle ichi fwynhau darllediadau byw o bob cwr o'r byd heb orfod gadael Aber!

Our live broadcast shows from the National Theatre, New York Met and the Royal Opera, allow you to watch the best live performances from across the globe in our comfy cinema in Aberystwyth!

**Sgriniadau byw
o Operau y Met yn
Efrog Newydd /
Live Screenings
from the New York
Met Opera**



Aida (Verdi)

25/1/25 – 5.30pm
31/1/25 – 1.00pm (encore)



Fidelio (Beethoven)

15/3/25 – 5.00pm
21/3/25 – 1.00pm (encore)



Le Nozze di Figaro (Mozart)

26/4/25 – 6.00pm
2/5/25 – 1.00pm (encore)



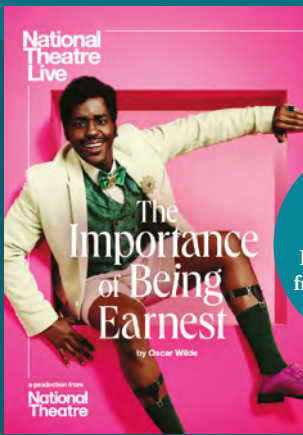
Salome (Strauss)

17/5/25 – 6.00pm
23/5/25 – 1.00pm (encore)



Il Barbiere di Siviglia (Rossini)

31/5/25 – 6.00pm
6/6/25 – 1.00pm (encore)



Sgriniadau
byw o'r Theatr
Genedlaethol /
Live Screenings
from the National
Theatre



The Importance of being Earnest

20/2/25 – 7.00pm

Dr. Strangelove

27/3/25 – 7.00pm

Sgriniadau byw
o'r Opera a Ballet
Brenhinol /
Live Screenings
from the Royal
Opera and Ballet



Offenbach's The Tales of Hoffman

15/1/25 – 6.45pm
20/1/25 – 1.00pm (encore)



Swan Lake

27/2/25 – 7.15pm
3/3/25 – 1.00pm (encore)



Romeo & Juliet

20/3/25 – 7.15pm
24/3/25 – 1.00pm (encore)



Puccini's Turandot

1/4/25 – 1.00pm
7/4/24 – 1.00pm (encore)



Wagner's Die Walkure

14/5/25 – 5.15pm
19/05/25 – 1.00pm (encore)



Ballet to Broadway Wheeldon Works

22/5/25 – 7.15pm
27/5/25 – 1pm

Arddangosfeydd | Exhibitions

ORIEL 1



Oriel 1 Cau Dros Dro, Tachwedd 2024 – Ebrill 2025

'Rydym wrth ein bodd bod Canolfan y Celfyddydau Aberystwyth wedi'i dewis i fod yn rhan o fenter gyffrous sy'n sefydlu Oriel Celf Gyfoes Genedlaethol i Gymru - **CELF**.

Mae **CELF** yn gweld 9 oriel ar draws Cymru yn ffurfio partneriaeth gydag Amgueddfa Cymru a Llyfrgell Genedlaethol Cymru gyda'r nod o rannu ein casgliad cenedlaethol o gelf gyfoes yn ehangach. Trwy raglen fenthyciadau, allgymorth a chomisiynu helaeth, bydd pobl yng Nghymru yn medru archwilio'r casgliad yn eu horielau lleol eu hunain yn ogystal ag ar-lein.

O ganlyniad 'rydym wedi derbyn buddsoddiad sylweddol gan Lywodraeth Cymru trwy Gyngor Celfyddydau Cymru i'n helpu i wella isadeiledd ein prif oriel.

Yn y cyfamser, mae ein horielau eraill yn parhau ar agor a byddwn yn lansio rhaglen ymgysylltu cymunedol newydd yn ogystal â chomisiynau **CELF** newydd cyffrous - cadwch lygad ar ein gwefan am y newyddion diweddaraf.

Gallery 1 Temporary Closure, Nov 2024 – April 2025

We are delighted that Aberystwyth Arts Centre has been selected to be part of an exciting initiative which establishes a National Contemporary Art Gallery for Wales- **CELF**.

CELF sees 9 galleries across Wales form a partnership with Amgueddfa Cymru and the National Library of Wales with the aim of sharing our national collection of contemporary art more widely. Through an extensive loans, outreach and commissioning programme, people in Wales will be able to explore the collection within their own local galleries as well as online.

As a result, we have received significant Welsh Government investment through the Arts Council of Wales to help us improve our main gallery infrastructure.

In the meantime, our other galleries remain open and we will launch a new community engagement programme as well as exciting new **CELF** commissions - please keep an eye on our website for forthcoming news.

Cydweithio i sefydlu ein horiel gyfoes genedlaethol i Gymru

Working together to establish our national contemporary gallery for Wales



GLYNN VIVIAN



STORIEL



CELF AR Y CYD



Oriel gelf gyfoes genedlaethol i Gymru
National contemporary art gallery for Wales



Anthony Shapland

Celwyddwr Celwyddwr / Liar Liar

15 Ebrill – 15 Mehefin / 15 April – 15 June

Mae'r arddangosfa hon yn defnyddio technegau cudd o wneud ffilmiau - propiau, hidlwyr, golau a sain. Ar un lefel mae hi'n ymwneud â rhith a chuddio; ar lefel arall mae'n tynnu ar brofiad bywyd Shapland o gyfunrywiaeth wledig, gan dyfu i fyny'n *performio*. Rhoddodd hyn y teimlad iddo, os oedd yn pasio ac yn ymdoddi i mewn, yna 'roedd y dirwedd o'i gwmpas yr un mor hydrin ac hylifol, yn esblygu'n gyson, popeth dros dro - yn stori.

Mae *Celwyddwr Celwyddwr* hefyd yn lansio testun Cymraeg newydd, a wnaethpwyd mewn deialog gyda'r bardd a'r artist Eysyllt Lewis mewn ymateb i nofel gyntaf Shapland *A Room Above a Shop* a gyhoeddwyd gan Granta.

Liar Liar uses hidden techniques of filmmaking – props, filters, light and sound. On one level the exhibition is about illusion and disguise; on another it draws on Shapland's life-experience of rural queerness, growing up *performing straight*. It gave him the sense that if he was *passing* and *blending-in* then the landscape around him was just as malleable and fluid, constantly evolving, always temporary – a story.

Liar Liar also launches a new Welsh text, made in dialogue with poet and artist Eysyllt Lewis in response to Shapland's first novel *A Room Above a Shop*, published by Granta.



Llun Cynhyrchiad, Sŵn Na Ddylid ei Glywed [Darllediad] 2018. Ffotograff: David Cushway.
Production Shot, A Sound Not Meant to be Heard [Broadcast] 2018. Photo: David Cushway.

 Cyngor Celfyddydau Cymru
Arts Council of Wales

 Heuldr gam
Llywodraeth Cymru
Sponsored by
Welsh Government

ORIEL 2

Erin Hughes LLORIO // DIFFYGIOL FLOORED // FLAWED

Tan 9 Chwefror / To 9 February

Yn *Llorio // Diffygiol* mae Erin Hughes yn cyflwyno ei sioe solo fawr gyntaf, gan ymchwilio i dirweddau Cymreig, hunaniaeth a'r cydadwaith rhwng y real a'r adeiledig. Ar yr olwg gyntaf, cyflwynir i ni dirweddau golygfaol a llawr marmor cywrain. Ond o edrych yn agosach, datgelir bod y rhain yn collages a grefftr yn fanwl, wedi eu gwneud o bapur marmor a wneir â llaw gan Hughes.

Yn y bôn, mae'r arddangosfa hon yn fyfyrdod personol a chymhleth ar berthynas Hughes gyda'r dirwedd Gymreig a deuoliaeth ei threftadaeth Seisnig-Gymreig Nid portread o le yn unig yw hwn, ond ystyriaeth o sut mae tirweddau, fel hunaniaethau, yn cael eu crefftio, eu hamgyffred a'u hail-ddychmygu dros amser.

Yn cyd-fynd â'r arddangosfa hon ceir sgwrs gan yr artist ar 25ain Ionawr, 5-6pm, yn y Stiwdio Gron a chyfres o weithdai marblo – gweler y wefan.



Cyngor Celfyddydau Cymru
Arts Council of Wales



In *Floored // Flawed*, Erin Hughes presents her first major solo show, an investigation into Welsh landscapes, identity, and the interplay of the real and the constructed. At first glance, viewers encounter scenic landscapes and an intricate marble floor. But upon closer inspection, these are revealed to be meticulously crafted collages, composed of Hughes's handmade marbled paper.

At its core, this exhibition is both a personal and complex reflection on Hughes's relationship with the Welsh landscape and the duality of her English-Welsh heritage. This is not simply a portrayal of place but an exploration of how landscapes, like identities, are crafted, perceived, and re-imagined through time.

This exhibition is accompanied by an artist talk on 25th Jan, 5-6pm, in the Round Studio and a series of marbling workshops – see website.

Lluosogrwydd / Multiplicity

24 Chwefror – 25 Mai / 24 February – 25 May

Mae'r arddangosfa hon yn ganlyniad i raglen fentora 6 mis sy'n arddangos gwaith 7 artist o liw, gan roi llwyfan i adrodd straeon nas adroddwyd ac i greu ymatebion artistig sy'n cynrychioli croestoriad, lluosogrwydd, a bod rhwng tiroedd ac hunaniaeth. Gan weithio mewn partneriaeth gyda'r artist arweiniol Jasmine Violet, mae hyn yn

rhan o brosiect ehangach o'r enw Persbectif(au), mewn cydweithrediad â Chyngor Celfyddydau Cymru ac Amgueddfa Cymru, i sicrhau newid sylweddol yn y modd y mae'r celfyddydau gweledol a'r sector treftadaeth yn adlewyrchu amrywiaeth ddiwyllianol ac ethnig ein cymdeithas ac i ddathlu'r cymunedau amrywiol sy'n ffurfio Cymru ar hyn o bryd.

The culmination of a 6 month mentorship programme that showcases the work of 7 artists of colour, giving a platform to tell untold stories and to create artistic responses that represent intersectionality, multiplicity, and being between lands and identity. Working in partnership with lead artist Jasmine Violet, this is part of a wider project



Cyngor Celfyddydau Cymru
Arts Council of Wales



called Perspective(s), in collaboration with the Arts Council of Wales and Amgueddfa Cymru – National Museum Wales to bring about a step change on how the visual arts and heritage sector reflect the cultural and ethnic diversity of our society and to celebrate the diverse communities that presently make up Wales.

ORIEL Y CAFFI

Y Llunwyr / The Picturemakers Ffiniau / Boundaries

6 Rhagfyr – 2 Chwefror / 6 December – 2 February

www.thepicturemakers.co.uk



Mae'r prosiect Ffiniau / Boundaries wedi profi i fod yn atgofus ac yn bryfoclyd, gan ganiatáu gwahanol ddehongliadau o'r pwnc gan bob un o'r 13 aelod o'r grŵp hwn o artistiaid gwledol sy'n byw ac yn gweithio yng nghanolbarth Cymru. Buom yn trafod, yn cyfnewid syniadau, yn creu mapiau-meddwl neu restrau, a dod o hyd i'r gerdd yn dwyn y teitl 'Borders' gan Alberto Rios, y cyfan yn ein galluogi i ddechrau arbrofi gyda'n syniadau ein hunain ynglyn â ffiniau.

Bu 11 aelod o'r grŵp yn cydweithio wrth gynhyrchu'r ffris a gyflwynir yn yr arddangosfa hon a ddechreuodd fywyd fel rhan o fap o Glawdd Offa (y ffin hynafol rhwng Cymru a Lloegr). Bu pedwar o'r artistiaid hefyd yn creu'r baneri sy'n ymddangos yma.

This Boundaries project has proved both evocative and provocative, allowing varied interpretations of the subject by all 13 members of this group of visual artists who all live and work in mid-Wales. We discussed, brainstormed, made mind-maps or lists and found the poem entitled 'Borders' by Alberto Rios, all of which allowed us to start experimenting with our own ideas of boundaries.

11 members of the group collaborated in producing the frieze presented at this exhibition which began life as a map section of Offa's Dyke (the ancient boundary between Wales and England). Four artists also made the banners that hang here.

Lloches Elin Vaughan Crowley

7 Chwefror – 30 Mawrth /
7 February – 30 March

Artist o Fachynlleth yw Elin Vaughan Crowley sy'n cymryd ysbrydoliaeth o'r tirwedd a'r gymuned o'i chwmpas. Mae sied amaethyddol yn ymddangos yn rheolaidd yn ei gwaith fel symbol o gynhesrwydd a chysgod mewn byd sy'n llawn cyferbyniadau.

Elin Vaughan Crowley is an artist from Machynlleth who takes inspiration from the landscape and community around her. Agricultural sheds appear regularly in her work as a symbol of warmth and shelter in a world full of contrasts.

@elincrowleyprint



ORIEL Y CAFFI

Byd Bach Aber

4 Ebrill – 8 Mehefin / 4 April – 8 June

Cyrhaeddodd Bruce Cardwell Aberystwyth ym 1981 i astudio yn y brifysgol, ac nid yw ei hoffter o'r dref wedi plygu hyd heddiw.

Mae'r arddangosfa hon yn dathlu'r bobl sy'n siapio natur cymuned Aberystwyth, cymuned Gymreig lewyrchus sydd â chymysgedd amrywiol o ddiwylliannau ac hunaniaethau.

Efallai y bydd y sawl sy'n edrych ar Aberystwyth ar fap yn gweld tref fach anghysbell ar arfordir gorllewinol Cymru, ond mae "Byd Bach Aber" yn dangos mai dyma'r hwb y mae'r byd hwn yn troi o'i gwmpas mewn gwirionedd.

Agorwch eich llygaid....

Bruce Cardwell arrived in Aberystwyth in 1981 to study at the university, and his affection for the town is undimmed today.



This exhibition celebrates the people who determine the nature of the community of Aberystwyth, a thriving Welsh community with a diverse mixture of cultures and identities.

Those looking at Aberystwyth on a map may see a remote settlement on the western seaboard of Wales, but "Byd Bach Aber" shows that it is actually the hub around which this world is spinning.

Open your eyes....

FFENEST Y PIAZZA WINDOW

Calennig

Tan 21 Ionawr / To 21 January

Yn yr arddangosfa ffenest Nadoligaidd hon mae pob blwch yn anrheg i'r dyfodol - eitemau sy'n ein hatgoffa'n dyner o'r hyn y gallwn gollu os na fyddwn yn eu hamddiffyn. Fel trysorau gwerthfawr, mae'r 'anrhegion' hyn yn cynrychioli'r harddwch a'r dreftadaeth y mae Cymru'n eu cynnig, o'i bywyd gwyllt unigryw i'w gwreiddiau diwylliannol. Wrth i ni ddatlu'r tymor ac edrych ymlaen at Galennig, y flwyddyn newydd Gymreig draddodiadol a ddethlir ar Ionawr 13eg, gadewch i'r anrhegion hyn ysbrydoli addewid ar y cyd: i drysori a diogelu'r rhannau bregus hyn o'n hunaniaeth ar gyfer y cenedlaethau sydd i ddod. Crewyd yr arddangosfa gan Jess Roberts, artist a darlunydd, ac fe'i hysbrydolwyd gan ei gwaith sy'n canolbwyntio ar gofio'r gorffennol tra'n gwarchod y dyfodol.

In this festive window display each box is a gift to the future - poignant reminders of what we stand to lose if we don't protect them. Like precious treasures, these 'gifts' represent the beauty and heritage that Wales offers, from its unique wildlife to its cultural roots. As we celebrate the season and look forward to Calennig, the traditional Welsh new year celebrated on January 13th, let these presents inspire a collective promise: to cherish and safeguard these fragile parts of our identity for generations yet to come. Created by Jess Roberts, artist and illustrator and inspired by her work which centres on remembering the past but conserving the future.



FFENEST Y PIAZZA WINDOW

Gŵyl Cariad Aber

25 Ionawr – 4 Mawrth / 25 January – 4 March

Mae Gŵyl Cariad Aber yn ystyried pob agwedd ar gariad trwy fynegiant artistig a chydweithio cymunedol. Bydd Ffenest y Piazza yn arddangos gwaith celf sy'n archwilio'n chwareus cymhlethdod cariad, gan ffurfio rhan o lwybr celfyddydau gweledol ehangach ar draws Aberystwyth. Mae'r ŵyl werin gwlad hon yn dod ag artistiaid a chymunedau lleol at ei gilydd i fywiogi misoedd ein gaeaf trwy weithdai, digwyddiadau ac arddangosfeydd ar draws y dref sy'n cynnig safbwyntiau ffres ar gysylltiad dynol a chreadigrwydd.

Gŵyl Cariad Aber explores all aspects of love through artistic expression and community collaboration. The Piazza Window will host artwork that playfully examines love's complexity, forming part of a wider visual arts trail across Aberystwyth. This grassroots festival brings together local artists and communities to brighten our winter months through workshops, events and a town-wide exhibition offering fresh perspectives on human connection and creativity.



SERAMEG / CERAMICS

Casgliad Serameg Prifysgol Aberystwyth yw un o'r prif gasgliadau o serameg anniwydiannol Prydeinig a rhyngwladol ym Mhrydain. Mae'n rhan o Amgueddfa ac Oriellau'r Ysgol Gelf sydd â statws achrediad amgueddfa llawn ac a gefnogir gan Archif Serameg.

The Ceramic Collection at Aberystwyth University is one of the major collections of British and international non-industrial ceramics in Britain. It is part of the School of Art Museum and Galleries which has full museum accreditation status and is supported by a Ceramic Archive.

www.ceramics-aberystwyth.com

Arddangosfa Ray Finch Exhibition (1914-2012)

25 Ionawr – 8 Mehefin / 25 January – 8 June

Mae'r arddangosfa hon yn dathlu gwaith Ray Finch, crochenydd crefftus o fri a gymerodd drosodd Grochendy Winchcombe yn Swydd Gaerloyw yng nghanol yr 20fed ganrif oddi wrth ei fentor, Michael Cardew. Ymhen amser, cymerodd Finch, a ddaeth yn brenitis i Cardew yn 22 oed, ofal am y crochenwaith ac yn y pen draw daeth yn berchennog arno. Dan ei arweiniad, adeiladwyd busnes llewyrchus iawn.

This exhibition celebrates the work of Ray Finch, a renowned craftsman potter who took over Winchcombe Pottery in Gloucestershire in the mid-20th century from his mentor, Michael Cardew. Finch, who became Cardew's apprentice at age 22, eventually took charge of the pottery and later became its owner. Under his leadership, he built a thriving business.



HWYL CREADIGOL I'R TEULU

Mae'r Oriell Serameg yn trefnu sesiynau celf a chrefft i deuluoedd. Does dim angen archebu lle dim ond galw heibio rhwng 10yb a 1yh. Mae'r gweithgareddau yn para am 30-45 munud, yn addas ar gyfer teuluoedd a phlant 3 oed+. Codir tâl gwirfoddol am gostau'r deunydd (£1 y plentyn, am ddim i oedolion).

CREATIVE FUN FOR THE FAMILY

The Ceramic Gallery run arts and craft sessions for families.

No booking required, drop in between 10am and 1pm. There is a voluntary small charge for materials (£1 per child, adults free). Events last 30-45 minutes and are suitable for families and children aged 3+. A voluntary contribution towards the cost of materials (£1 per child. Free for adults).

Ionawr – 25 January:
Creu Patrymau –
Making Patterns

Chwefror – 22 February:
Clai Gweadog – Textured Clay

29 Mawrth – March: Crefftau'r
Gwanwyn – Spring Crafts

Am ragor o wybodaeth /
For further information:
Louise Chennell; loc@aber.ac.uk.

01970 622192



Cyfleoedd eraill i gymryd rhan/ Other opportunities to take part

u3a Aberystwyth

u3a yw eich cyfle chi i ddatblygu sgiliau newydd a chreu ffrindiau yma yng Nghanolfan y Celfyddydau.

O'r Gwerthfawrogi Celf i Archeoleg, mae rhywbeth at ddant pawb.

The University of the Third Age is your opportunity to develop new skills and make new friends at the Arts Centre.

From Art Appreciation to Archeology, the choices are endless.

Gwybodaeth / Information
www.u3asites.org.uk/aberystwyth



Dysgu Gydol Oes/ Lifelong Learning Courses

Gallwch gymryd rhan mewn nifer o ddsbarthiadau Dysgu Gydol Oes yma yn y Ganolfan.

Many Lifelong Learning Course are delivered here at the Arts Centre.

Sganiwch y côd QR am wybodaeth / Scan the QR code for information

dysgu@aber.ac.uk
learning@aber.ac.uk
01970 62 15 80



Aberystwyth SCIENCE CAFÉ CAFFI GWYDDONIAETH

Dewch i wrando a sgwrsio am y syniadau gwyddonol diweddaraf yn ein Caffi Gwyddoniaeth cyfeillgar. Croeso i bawb. Mynediad am ddim!

Join us at our friendly Science Café to hear about and discuss some of the latest ideas in science. All welcome. Free to attend!

27.1.25 – 7.30pm

Hanna Binks: The Science of Bilingualism

17.2.25 – 7.30pm

17.3.25 – 7.30pm

Bar y Theatr/ Theatre Bar





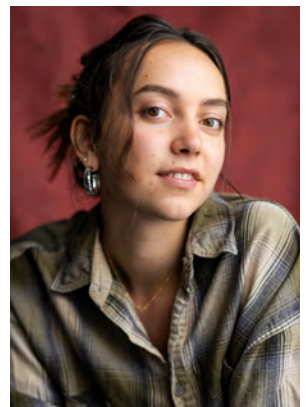
Dosbarthiadau a Chyrsiau Classes and Courses

"Without the Art Centre, I wouldn't be where I am today. The incredible Art Centre teachers and having the opportunity to perform on those stages ignited my passion and boosted my confidence to pursue acting. It gave me my first professional credit and a career I love. I will always treasure the training, support, and memories I gained from Aberystwyth Art Centre, as well as the opportunities it continues to offer".

Maeve Courtier-Lilley, actores/actress

Eisiau dysgu ddocsio? Awydd ail gydio yn y brws paent neu rhoi tro ar grochenwaith? Ffansi bod yn actor neu'n animeiddiwr? Beth bynnag mae **amser da** yn ei olygu i ti, dyma'r lle i roi tro arni a datblygu dy sgiliau.

Want to learn clog dancing? Fancy picking up a paint brush or trying pottery? Want to be an actor or animator? Whatever **time well spent** looks like to you, we're the perfect place to give it a go and develop your skills.



I gadw lle neu am wybodaeth bellach
To book or for more information:
01970 62 28 88
cymrydrhan@aber.ac.uk
takepart@aber.ac.uk



Cyrsiau Wythnosol - Weekly Courses

Gwanwyn - Spring 2025



DIWRNOD / DAY

AMSER / TIME

OEDRAN / AGE

LLUN / MONDAY

Academi Hijinx Academy	9.30am – 3.30pm	18+
Clwb Gwanwyn Club	1.00pm – 4.00pm	50+
Ysgol Ddawns / Dance School	4.00pm – 9.00pm	Pawb/All
Dawns Theatr Gerddorol / Musical Theatre Dance	4.00pm – 5.00pm	11+
Theatr Ieuenctid Hŷn / Upper Youth Theatre	5.00pm – 7.00pm	14+
Iwcadwli (Ukulele Group)	6.00pm – 7.00pm	16+
Crochenwaith i Ddechreuyr / Pottery for Beginners	6.30pm – 9.00pm	16+
Tap i Oedolion / Adult Tap	7.00pm – 8.00pm	16+
Theatr Gymunedol Aberystwyth – ACT / Aberystwyth Community Theatre	7.15pm – 9.30pm	16+

MAWRTH / TUESDAY

Grŵp Celf a Chyfeillgarwch / Art and Friendship Group	10.30am – 12.30pm	16+
Crochenwaith / Pottery	12.30pm – 3.00pm	16+
Ysgol Ddawns / Dance School	4.00pm – 9.00pm	Pawb/All
Clocsió i Blant / Children's Clocsió	5.30pm – 7.00pm	5-11
Lab Animeiddio / Animation Lab	4.00pm – 6.00pm	9-12
Lab Animeiddio / Animation Lab	6.15pm – 8.15pm	12+
Crochenwaith-Pob Lefel / Pottery–All Levels	6.30pm – 9.00pm	16+
Côr Cymuned Heartsong Community Choir	7.15pm – 9.30pm	18+
Dawnsywr Seithenyn	7.30pm – 9.00pm	18+

MERCHER / WEDNESDAY

Ysgol Ddawns / Dance School	4.00pm – 9.00pm	Pawb/All
Bale i Oedolion / Adult Ballet	6.15pm – 7.15pm	18+
Printio Sgrin / Screen Printing	6.30pm – 8.30pm	16+
Crochenwaith Adeiladu â Llaw / Pottery Hand Building with Clay	6.30 – 9.00pm	16+

IAU / THURSDAY

Arbrofi mewn Paentio ac Arlunio / Experimentation in Painting and Drawing	9.30am – 12.30am	18+
Bale i Fabanod / Baby Ballet	2.00pm – 2.30pm	2+
Ysgol Ddawns / Dance School	4.00pm – 9.00pm	Pawb/All
Sêr Bach / Stage School Little Stars	4.00pm – 4.30pm	3-4
Clwb Celf / Art Club	4.30pm – 6.00pm	6+
Preludes / Stage School Preludes	4.30pm – 5.15pm	5-6
Tiny Tappers and Mini Moderns	5.00pm – 5.30pm	4-5
Theatr Ieuencid Ifanc / Lower Youth Theatre	5.30pm – 7.30pm	11-14
Prosiect Bach Dawns / The Little Dance Project	5.30pm – 7.00pm	8-12
Mentora Celf / Art Mentoring	6.30pm – 8.00pm	12+
Ffotograffiaeth Ddu a Gwyn / Black and White Photography.	6.30pm – 8.30pm	16+
Crochenwaith – Uwch / Pottery – Advanced	6.30pm – 9.00pm	16+

GWENER / FRIDAY

Bale i Oedolion / Adult Ballet	12.15pm – 1.00pm	16+
Babis Bale a Fi / Ballet Babies & Me	1.15pm – 1.45pm	18 mis/18 months +
Ysgol Ddawns / Dance School	4.00pm – 8.00pm	Pawb/All
Celfyddydau Acro Arts	4.00pm – 7.15pm	2.5+

SADWRN / SATURDAY

Dechrau Dawnsio / Dinky Dancers	9.00am – 9.30am	18 mis+/18 months+
Dechrau Dawnsio + / Dinky Dancers +	9.30am – 10.00am	2.5+
Ysgol Lwyfan / Stage School	10.00am – 12.00pm + 12.20pm – 2.30pm	7-11
Ysgol Ddawns / Dance School	9.00am – 4.30pm	Pawb/All
Bywlniad - Hunan-Arweiniad / Life Drawing - Self-Led	10.30am – 1.30pm	18+
Modelu mewn Clai / Clay Modelling	10.30am – 12.30pm 1.30pm – 3.30pm	5+ 5+
Dawns Theatr Gerddorol / Musical Theatre Dance	12.45pm – 1.45pm	11+
Y Grŵp Barddoniaeth Ddistyllfa Eiriau / The Word Distillery Poetry Group (*3ydd Dydd Sadwrn y mis / 3rd Saturday of each month)	2.00 – 4.30pm	18+

SUL / SUNDAY

Ysgrifennu Creadigol / Creative Writing	2.00pm – 4.30pm	18+
---	-----------------	-----

01970 62 28 88 | cymrydrhan@aber.ac.uk | takepart@aber.ac.uk

CYRSIAU BYR A GWEITHDAI GWYLIAU YSGOL/ SHORT COURSES AND SCHOOL HOLIDAY WORKSHOPS

Evch i'n gwefan i weld y cyfan / Visit our website for full information.
aberstwythartscentre.co.uk/get-involved/



Bwyd a Diod

Food and Drink

Ar agor yn ddyddiol. Ewch i'n gwefan am amseroedd | Open daily. Visit our website for times.

Caffi Café

Prydau poeth a salads ffres
Freshly made hot meals and salads.

Cacennau a choffi gwyth
Great cakes and coffee.

Cynyrch Cymreig
Welsh produce.

Opsiynnau llysieuol, di-glwten a figan
Vegetarian, gluten free and vegan options.

"I've performed all over and this is the best Arts Centre café I've ever been to!"

Jess Gillam Saxophonist and BBC Presenter.

"Dwi'n dod i'r caffi bob wythnos i gwrdd ffrindie ac i weithio. Mae na buzz go iawn yma"

"With the amazing food and the sea views, it's the best café in town"



Bar y Theatr Theatre Bar

Dewis eang o winoedd, cwrw a gwirodydd
A variety of wines, beers and spirits





Siop | Shop

Ar agor yn ddyddiol. Ewch i'n gwefan am amseroedd | Open daily. Visit our website for times.

"The shop in the Arts Centre is my go-to for all my friends' birthday gifts"

"Dwi'n caru'r siop, mae gymaint o bethe lleol a gwahanol yna"

"My kids physically drag me into the shop between dance lessons. We always find lots of quirky and unique treats for us all"

"Mae 'na rhywbeth i swtio pob poced, hyd yn oed pocedi'r Cardis!"



Ein Cyfeillion | Our Friends



Hoffi Canolfan y Celfyddydau? Dewch yn Gyfaill i ni! Mae Cyfeillion Canolfan y Celfyddydau yn elusen gofrestrdig sydd wedi'i chreu trwy ddymuniad cymuned Aberystwyth, i gydnabod Canolfan y Celfyddydau fel sefydliad o safon sy'n gwneud gwahaniaeth enfawr i'r gymuned leol a thu hwnt. Mae'n cefnogwyr yn cynnwys Taron Egerton, Jacob Ifan, Gillian Clarke a Shani Rhys James. Mae'r Cyfeillion yn cefnogi ein gwaith mewn sawl ffordd, gan gynnwys ymgyrchoedd ariannol a digwyddiadau hyrwyddo. Mae'r aelodaeth am ddim.

Are you a fan of the Arts Centre? Become a Friend! Friends of the Arts Centre is a registered charity and an organisation created from a desire by the community of Aberystwyth, to recognise the Arts Centre as a world-class organisation with a huge impact on the local community and beyond. Patrons include Taron Egerton, Jacob Ifan, Gillian Clarke, Shani Rhys James. Our Friends support our work in many ways including funding campaigns and promoted activity. Membership is free.

I ymuno | To join:
www.artscentrefriends.co.uk



Ein Stwdios Creadigol Our Creative Studios

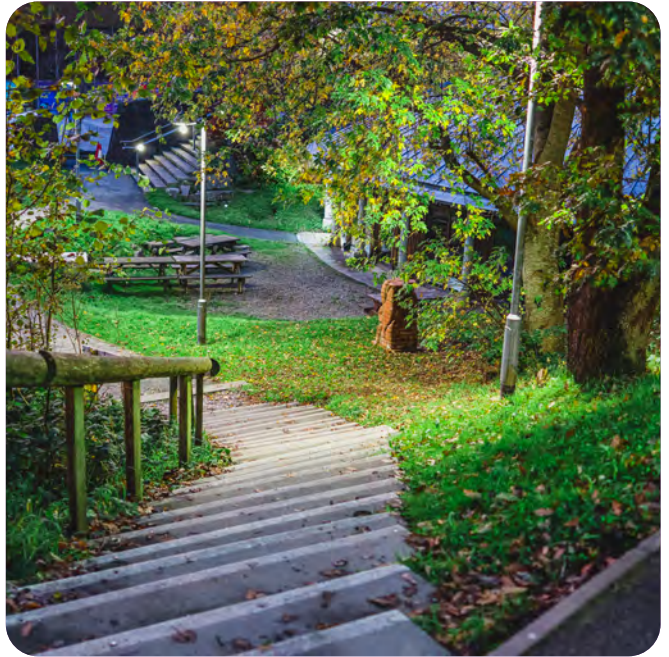
Mae ein stwdios creadigol yn hybu'r celfyddydau yng nghanolbarth Cymru, ac yn gartref i artistiaid, crefftwyr, busnesau ac asiantaethau creadigol.

Our creative studios boost the arts in Mid Wales, they house a mix of artists, craft workers, creative businesses and agencies.

Am wybodaeth neu i renti stwdio
For information or to rent a studio:
Louise Amery lla@aber.ac.uk

“

Dwi'n switcho off
pan dwi yma a
jyst yn joio



“

The vibe, the
events, the
atmosphere, the
coffee, it's just a
good place to be



“

It's welcoming.
I never feel out of
place being here
on my own



Theatr | Theatre

3

S	1	2	3	4	5	6	7	8	9	10	11	12	13	14	15	16	17	18	S							
R	1	2	3	4	5	6	7	8	9	10	11	12	13	14	15	16	17	18	19	20	21	22	R			
Q	2	3	4	5	6	7	8	9	10	11	12	13	14	15	16	17	18	19	20	21	Q					
P	1	2	3	4	5	6	7	8	9	10	11	12	13	14	15	16	17	18	19	20	21	22	P			
O	1	2	3	4	5	6	7	8	9	10	11	12	13	14	15	16	17	18	19	20	21	22	O			
N	1	2	3	4	5	6	7	8	9	10	11	12	13	14	15	16	17	18	19	20	21	22	23	N		
M	1	2	3	4	5	6	7	8	9	10	11	12	13	14	15	16	17	18	19	20	21	22	M			
L	5	6	7	8	9	10	11	12	13	14	15	16	17	L												
K	1	2	3	4	5	6	7	8	9	10	11	12	13	14	15	16	17	18	19	20	21	22	23	24	K	
J	1	2	3	4	5	6	7	8	9	10	11	12	13	14	15	16	17	18	19	20	21	22	23	J		
I	1	2	3	4	5	6	7	8	9	10	11	12	13	14	15	16	17	18	19	20	21	22	23	24	I	
H	1	2	3	4	5	6	7	8	9	10	11	12	13	14	15	16	17	18	19	20	21	22	23	24	H	
G	1	2	3	4	5	6	7	8	9	10	11	12	13	14	15	16	17	18	19	20	21	22	23	24	25	G
F	1	2	3	4	5	6	7	8	9	10	11	12	13	14	15	16	17	18	19	20	21	F				

4

2

Sinema | Cinema

1

H	15	14	13	12	11	10	9	8	7	6	5	4	3	2	1	H		
G	15	16	15	14	13	12	11	10	9	8	7	6	5	4	3	2	1	G
F	17	16	15	14	13	12	11	10	9	8	7	6	5	4	3	2	1	F
E	17	16	15	14	13	12	11	10	9	8	7	6	5	4	3	2	1	E
D	17	16	15	14	13	12	11	10	9	8	7	6	5	4	3	2	1	D
C	15	14	13	12	11	10	9	8	7	6	5	4	3	2	1	C		
B	12	11	10	9	8	7	6	5	4	3	2	1	B					
A	9	8	7	6	5	4	3	2	1	A								

1

SGRIN | SCREEN

LLWYFAN | STAGE

ARCHEBU TOCYNNAU

Gallwn gadw tocynnau a archebir yn eich enw am bedwar diwrnod. Ar ôl hynny, cânt eu rhyddhau i'w gwerthu. Os byddwch yn archebu tocynnau ar ddiwrnod y digwyddiad/ffilm, bydd yn rhaid i chi dalu'n llawn wrth archebu. Os byddwch wedi archebu tocynnau a heb dalu amdanynt erbyn diwrnod y digwyddiad/ffilm, cânt eu rhyddhau i'w gwerthu.

AD-DALU A CHYFNEWID

Os na allwch ddod i berfformiad neu ffilm yr ydych wedi archebu tocynnau ar eu cyfer, gallwch anfon eich tocynnau yn ôl hyd at ddau ddiwrnod cyn y perfformiad ac fe anfonwn nodyn credyd llawn atoch. Neu gallwn newid eich tocynnau am berfformiad mwy cyfleus o'r un sioe neu ffilm. Os bydd y tocynnau i gyd wedi'u gwerthu, fe wnawn ein gorau i ailwerthu eich tocynnau i chi heb gost ychwanegol (ond ni allwn addo gwneud hyn).

FFI ARCHEBU

Bydd tâl na ellir ei ad-dalu o £1.50 yn cael ei roi ar bob tocyn i dalu am gost gweinyddiaeth.

PRISIAU GOSTYNGOL

Mae'r prisiau hyn ar gael i bobl 60+ sydd wedi ymddeol yn llwyr, pobl ifanc o dan 16 oed, myfyrwyr llawn amser, pobl ddi-waith, y sawl sy'n derbyn credydau treth gwaith a phobl anabl. Croesewir babis i sioeau lle cynigir gostyngiad ar y pris i blant.

HWYRDDYFODIAID

Er mwyn tarfu cyn lleied â phosibl ar gwsmeriaid eraill a pherfformwyr, gellir gofyn i bobl sy'n cyrraedd yn hwyr aros tan y bydd yn gyfleus cyn mynd i mewn i'r awditorïwm, yn ôl barn ein staff. O dan amgylchiadau eithriadol ac yn dibynnu ar y perfformiad, efallai ni fydd yn bosibl gadael hwyrrddyfodiaid i mewn o gwbl. Felly gwnech bob ymdrech os gwelwch yn dda i gyrraedd mewn da bryd. Ni roddir ad-daliad i gwsmeriaid sy'n methu rhan o'r perfformiad neu'r perfformiad cyfan am eu bod yn hwyr.

GWARCHOD DATA

Mae Ganolfan y Celfyddydau Aberystwyth, fel rhan o Brifysgol Aberystwyth sy'n gweithredu fel rheolwr data, yn cydymffurfio â'r Ddeddf Gwarchod Data a'r Rheoliad Gwarchod Data Cyffredinol. Pan 'rydym yn prosesu'ch archeb / pryniad, gofynnir i chi am eich enw, cyfeiriad, e-bost a rhif ffôn. Mae hyn yn hanfodol er mwyn prosesu archebion lle na ddefnyddir arian parod. Efallai y gofynnir i chi hefyd gael eich hysbysu am ddiwyddiadau a gweithgareddau a gynhelir yng Nghanolfan y Celfyddydau Aberystwyth yn y dyfodol. Rydym yn cadw gwybodaeth personol at bwrpasau gweinyddu, hysbysebu, marchnata a chodi arian. Yn dibynnu ar beth yr ydych wedi dweud wrthym, byddwn yn i) prosesu'ch gwybodaeth ar y sail eich bod yn ymgymryd â chytundeb pan 'rydych yn prynu tocynnau neu gynnyrch o'r Ganolfan neu pan 'rydych yn cyflwyno rhodd (Erthygl 6(1)(b) y Rheoliad). ii) prosesu'ch gwybodaeth ar y sail eich bod wedi rhoi caniatâd ar gyfer y prosesu hyn ac ar gyfer cyfathrebiadau cysylltiedig (Erthygl 6(1)(a) y Rheoliad) a iii) prosesu'ch gwybodaeth ar y sail ei bod er 'lles dylus' y Ganolfan i wneud hynny (Erthygl 6(1)(f) y Rheoliad) sef bod angen y wybodaeth ar y Ganolfan er mwyn prosesu trafodion ariannol ac eraill ac i gadw cofnod o'r rhain. Defnyddir eich gwybodaeth gan staff y Ganolfan yn unig. Defnyddir trydydd partion yn achlysurol i ddarparu cyfleusterau neu wasanaethau i helpu prosesu data. Am ragor o wybodaeth cysylltiedig â Chanolfan y Celfyddydau Aberystwyth neu Swyddog Gwarchod Data'r Brifysgol ar infocompliance@aber.ac.uk

Sylwch: Ni chaniateir offer ffotograffeg na fideo mewn unrhyw berfformiad.



Mae celf a diwylliant i bawb. Ond os oes gennych nam neu ofyniad mynediad penodol, yn aml, gall mwynhau ymweliad i theatr neu ganolfan gelf fod yn fwy cymhleth na dim ond archebu tocynnau a dewis beth i'w wisgo. Mae Hynt yn gynllun cenedlaethol sy'n gweithio gyda theatrau a chanolfannau celf ar draws Cymru i wneud pethau'n glir ac yn gyson. Mae gan rai â cherdyn Hynt hawl i gael tocyn yn rhad am ddim i gynorthwyydd personol neu ofaludd yn y Ganolfan y Celfyddydau a phob theatr a chanolfan gelf sy'n rhan o'r cynllun. Ewch i www.hynt.co.uk neu www.hynt.cym am wybodaeth ac arweiniad ar y cynllun. Gallwch hefyd gael gwybod os gallwch chi neu'r person rydych yn gofalu amdano/i ymuno â'r cynllun a chwblhau ffurflen gais.

CYFLEUSTERAU AR GYFER YMWELWYR ANABL

Os hoffech holi am y cyfleusterau cyn dod i Ganolfan y Celfyddydau, ffoniwch 01970 623232 | artstaff@aber.ac.uk. Mae lle wedi'i gadw ger y brif fynedfa i yrwyr sy'n methu cerdded yn dda. Mae dau le yng nghefn y theatr hefyd, ar yr un gwastad â'r prif gyntedd. Gall pobl mewn cadeiriau olwyn fynd i holl awdatoria a gweithdai'r Ganolfan. Mae'r prif gyntedd a'r swyddfa docynnau ar yr un gwastad â'r tu allan a gellir mynd mewn lifft i gyntedd y theatr ac ar lifft grisiau i lawr i'r lefel is. Mae croeso i gwn tywys a chwn cymorth. Gellir mynd mewn cadair olwyn i'r toiledau ar bob lefel ag eithrio'r cyntedd isaf. Ceir dolenni clywed yn y Neuadd Fawr, y Theatr a'r Sinema.

RESERVATIONS

Tickets reserved in your name can be held for four days, after which point they will be released for sale. Tickets cannot be reserved on the actual day of the event/screening, but must be paid for in full at time of booking. Any tickets not paid for by the day of the event/screening will be released.

REFUNDS AND EXCHANGES

If for any reason you find you are unable to make a performance or screening you have booked seats for, your tickets can be returned up to two days in advance of a performance, and we will issue you with a full credit note. Alternatively we can exchange your tickets for a more suitable performance of the same show or film, or in the event of a full house we will do our best to re-sell your tickets for you at no additional charge (although this cannot be guaranteed). This does not apply to courses.

BOOKING FEE

A £1.50 non-refundable charge is included within each ticket to cover the cost of administration.

CONCESSIONS

The rate is available for: 60+ in full time retirement, under 16s, full time students, unemployed, those receiving working tax credits and disabled people. Babies are welcome at events that have a child's concession price as advertised.

LATECOMERS

In order to minimise disturbance to other customers and performers, latecomers may be asked to wait until a convenient moment before being allowed into an auditorium, as judged by our staff. In exceptional circumstances and depending on the performance, we may be unable to admit latecomers at all. Please therefore make every effort to attend performances in plenty of time. No refund will be given for customers who miss all or parts of a performance due to lateness.

DATA PROTECTION

Aberystwyth Arts Centre, as part of Aberystwyth University which acts in the capacity of data controller, conforms to the Data Protection Act and the General Data Protection Regulation. When processing your booking / purchase we will ask you for your name, address, email and telephone number. This is essential for processing all non-cash bookings. We may also ask you if you would like to be kept informed about forthcoming events and campaigns at Aberystwyth Arts Centre. We retain personal information for administration, advertising, marketing and fundraising purposes. Depending on what you have told us, we will be i) processing your information on the grounds that you have provided consent for this processing and for associated communications (Article 6(1)(a) of GDPR) ii) processing your information on the grounds that you entering into a contract when you buy tickets or products from the Arts Centre or when you make a donation (Article 6(1)(b) of GDPR) and iii) processing your information on the grounds that it is in the 'legitimate interests' of the Arts Centre to do this (Article 6(1) (f) of GDPR) in that the Arts Centre requires the information in order to process financial and other transactions and keep a record of these. Your information will only be accessed and used by Arts Centre staff. Third parties are occasionally used to provide facilities or services to help process data. For further information please contact Aberystwyth Arts Centre or the University Data Protection Officer at infocompliance@aber.ac.uk

Please note: No photography or video equipment is allowed in any performance.



Art and culture is for everyone. But if you have an impairment or a specific access requirement, often enjoying a visit to a theatre or an arts centre can be more complicated than just booking tickets and choosing what to wear. Hynt is a national scheme that works with theatres and arts centres across Wales to make things clear and consistent. Hynt cardholders are entitled to a ticket free of charge for a personal assistant or carer at the Arts Centre and all the theatres and arts centres participating in the scheme. Visit www.hynt.co.uk or www.hynt.cym to find a range of information and guidance about the scheme. You can also find out whether you or the person you care for are eligible to join the scheme and complete an application form.

ACCESS FOR DISABLED VISITORS

If you would like to check on any access issues before you visit the Arts Centre please call 01970 623232 | artstaff@aber.ac.uk. Parking is reserved next to the main entrance approach for drivers with limited mobility. Two spaces are also available at the rear of the theatre, with level access into the main foyer. Wheelchair access is possible to all auditoria and workshop spaces in the venue. Access at ground level to main foyer and box office, by lift up to the theatre foyer and by stair lift down to the lower level. Guide dogs and assistance dogs are welcome. Toilet facilities are accessible on all levels except the lower foyer. Hearing loops are installed in the Great Hall, Theatre and Cinema.

“

**It's a really nice place to
just be in the moment and
enjoy a good meal or a
drink with friends**



“

**Dwi bob amser
yn teimlo'n well
ar ôl bod yma**



Dyddiadur digwyddiadau byw | Live event diary

Ionawr / January

7-25 The Wardens: Dick Whittington and the Pi-Rats of the Caribbean	7pm + Matinees	Th
25 Aberystwyth Choral Society	7.30pm	NF/GH
30-31 Rhod Gilbert and The Giant Grapefruit	8pm	NF/GH

Chwefror / February

1 Mynediad Am Ddim	7.30pm	NF/GH
2 Charlotte Spruit and Xioawen Shang	3pm	NF/GH
6 Hurlyburly Theatre: You are the Sun	10.30am/11.45am/2.30pm	St
7 Oh What a Night!	8pm	NF/GH
8 Maisie Adam: Appraisal	8pm	NF/GH
12 Mewn Cymeriad: Congrinero	7.45pm	St
14 Sinfonia Cymru: Music of the Heart	7pm	NF/GH
14 Motionhouse: Hidden	7.30pm	Th
15 The UK Rock Show	8pm	NF/GH
15 Mark Thomas: Gaffa Tapes	7.30pm	Th
21-22 Trawsnewid/Transform	Various	
26 Milkshake! Live on Holiday	12pm/3.30pm	Th
26 Little Wander: Clwb comedi/Comedy Club	8pm	St
27 Rude Science: Gastronom	11.30am/3pm	NF/GH
27 Kendal Mountain Tour	7.30pm	Th
28 Rotary Ardal Aberystwyth: Cyngerdd Gŵyl Dewi/St David's Day Concert	7.30pm	NF/GH

Mawrth / March

2 The Apex Singers	4pm	NF/GH
4-5 Company of Sirens: Water Wars	7.45pm	St
5 Srishti: Sevens	7.30pm	Th
6 The Dazzling Diamonds	7.30pm	Th
6 Cicio'r Bar	7.45pm	St
7 UPROAR: Ligetti's Chamber Concerto + New Music from Wales	8pm	NF/GH
7 Miles Jupp: On I Bang	7.30pm	Th
12 Tmesis Theatre: Sealskin	7.30pm	Th
13 BBC NOW: Shostakovich 9 with Christoph König	7.30pm	NF/GH
14-15 Theatr Iolo: Tidy/Taclus	14: 1pm (Schools/ysgolion) 15: 11am (Cymraeg) 2pm (English)	Th
15 What's Love Got to Do With It?	8pm	NF/GH
21+22 Arts Centre Youth Theatre: No Regrets	7pm	St
21 Ryan Young	7.30pm	Th
21 Bronwen Lewis	8pm	NF/GH
22 The Mersey Beatles	8pm	MF/GH
27-29 Sherman Theatre + Hijinx: Housemates	3pm, 7.30pm	Th
26 Little Wander: Clwb comedi/Comedy Club	8pm	St
29 Philomusica Aberystwyth	7pm	NF/GH

Ebrill / April

3 The Undercover Hippy	8pm	NF/GH
4 Alfie Moore: A Face for Radio	7.30pm	Th
4 Mewn Cymeriad: I am Lloyd George	7.45pm	St
5 John's Boys	7.30pm	HF/GH
8 Cyngerdd Ysgolion Ceredigion/Ceredigion Schools Concert	7pm	NF/GH
9 Little Angel Theatre: Persephone: A Tale of the Seasons	10am/11.45am/2.30pm	St
11 Gareth Owen (piano)	7pm	NF/GH
12 Darkside: The Steel Breeze Tour	8pm	NF/GH
12+14 NT Connections Festival	6pm	Th
15 The Bubble Show	2pm	Th
17 Roald Dahl - Dychmygwch! Imagine That!	11am (Cymraeg) 2pm (English)	St
17 Haka Entertainment: A Night of Musical Theatre	7.30pm	Th
23-24 Mei Theatrical Ltd: There's a Monster in Your Show	23: 2pm, 24: 11am	Th
25 Chris McCausland: Yonks!	8pm	NF/GH
26 Cymdeithas Gorawl Aberystwyth/Aberystwyth Choral Society	7.30pm	NF/GH

Swyddfa Docynnau | Box Office

01970 62 32 32

artstaff@aber.ac.uk

aberystwythartscentre.co.uk

    @aberystwytharts

Canolfan y Celfyddydau Aberystwyth

Aberystwyth Arts Centre

Prifysgol Aberystwyth University

Penglais, Aberystwyth.

SY23 3DE

Am gopi o'r rhaglen mewn print mawr /
For a copy of this programme in large print;

01970 62 32 32 / artstaff@aber.ac.uk



Lleolir Canolfan y Celfyddydau yng nghanol campws Prifysgol Aberystwyth. Rydych yn troi i mewn i'r campws oddi ar yr A487 ar y ffordd i'r gogledd o ganol tref Aberystwyth. Ceir arwyddion clir. Gellir parcio ger y Ganolfan am ddim o 5pm ymlaen gyda'r nos a thrwy'r amser ar benwythnosau. Codir tâl bychan yn ystod y dydd.

The Arts Centre is situated at the heart of the campus of Aberystwyth University. The turning onto campus is from the A487 as you head North out of the main Aberystwyth town centre and is well signposted. Car parking is free from 5pm in the evenings and all weekends. During the day a small fee is charged.

Mae Canolfan y Celfyddydau Aberystwyth yn adran o Brifysgol Aberystwyth ac yn rhan o Athrofa'r Celfyddydau a'r Dyniaethau. Cydnabyddir Canolfan y Celfyddydau Aberystwyth gan Gyngor Celfyddydau Cymru fel Canolfan Ranbarthol y Celfyddydau. Mae Canolfan y Celfyddydau'n ddiolchgar i'r canlynol am eu cymorth ariannol: Cyngor Celfyddydau Cymru, Prifysgol Aberystwyth a Chyngor Sir Ceredigion. Mae Canolfan y Celfyddydau Aberystwyth yn aelod o Creu Cymru.

Aberystwyth Arts Centre is a department of Aberystwyth University and part of the Faculty of Arts and Social Sciences.

Aberystwyth Arts Centre is recognised as a Regional Arts Centre by the Arts Council of Wales.

The Arts Centre gratefully thanks the following for their financial support: Arts Council Wales, Aberystwyth University and Ceredigion County Council. Aberystwyth Arts Centre is a member of Creu Cymru.



 Creu Cymru



 Cyngor Celfyddydau Cymru
Arts Council of Wales

ARIENNIR GAN
Y LOTERI
LOTTERY FUNDED

